

ORDINANCE NO. 1995-1

AN ORDINANCE EXTENDING THE CORPORATE LIMITS OF THE CITY OF  
MELROSE TO INCLUDE CERTAIN UNINCORPORATED AND UNPLATTED  
LAND WHICH IS NOW COMPLETELY SURROUNDED BY LAND IN THE  
MUNICIPAL LIMITS OF THE CITY OF MELROSE

**WHEREAS**, a Petition dated July 13, 1995, requesting annexation of the territory described in the Ordinance, was presented to the City Clerk-Treasurer of the City of Melrose on the 13th day of July, 1995; and

**WHEREAS**, the Petition was signed by all of the owners of land within the territory described; and

**WHEREAS**, the City Council has determined that the Petition fills the requirements of Minnesota Statutes Section 414.033, Subdivision 2, Paragraph 2.

**WHEREAS**, the territory described below is not presently included within the corporate limits of any incorporated city; and

**WHEREAS**, the territory is completely surrounded by lands already included within the corporate limits of the City and is deemed to be urban or suburban in character;

**THE CITY COUNCIL OF THE CITY OF MELROSE, MINNESOTA ORDAINS:**

**SECTION 1.** The corporate limits of the City of Melrose, Minnesota, are hereby extended to include the unplatted territory described as follows, which territory now is and has been completely surrounded by territory already included within the City limits;

All that part of the Southwest Quarter of the Southeast Quarter of Section 35, Township 126, North of Range 33 West, lying Southerly of the center line of Stearns County Highway 65, in Stearns County, Minnesota.

**SECTION 2.** Filing. The City Clerk-Treasurer is directed to file certified copies of this Ordinance with the Secretary of State, the County Auditor of Stearns County, the Town Clerk of Melrose Township, the Town Clerk of Grove Township, and the Minnesota Municipal Board.

**SECTION 3.** The population of the annexed territory is four persons.

**SECTION 4.** Effective Date. This Ordinance takes effect upon passage and publication, and the filing of certified copies as directed in Section 2, and approval of the Ordinance by the Minnesota Municipal Board.

Adopted by the City Council this 21st day of September, 1995.



JOSEPH BECKERMANN - ACTING MAYOR  
CITY OF MELROSE, MINNESOTA

ATTEST:

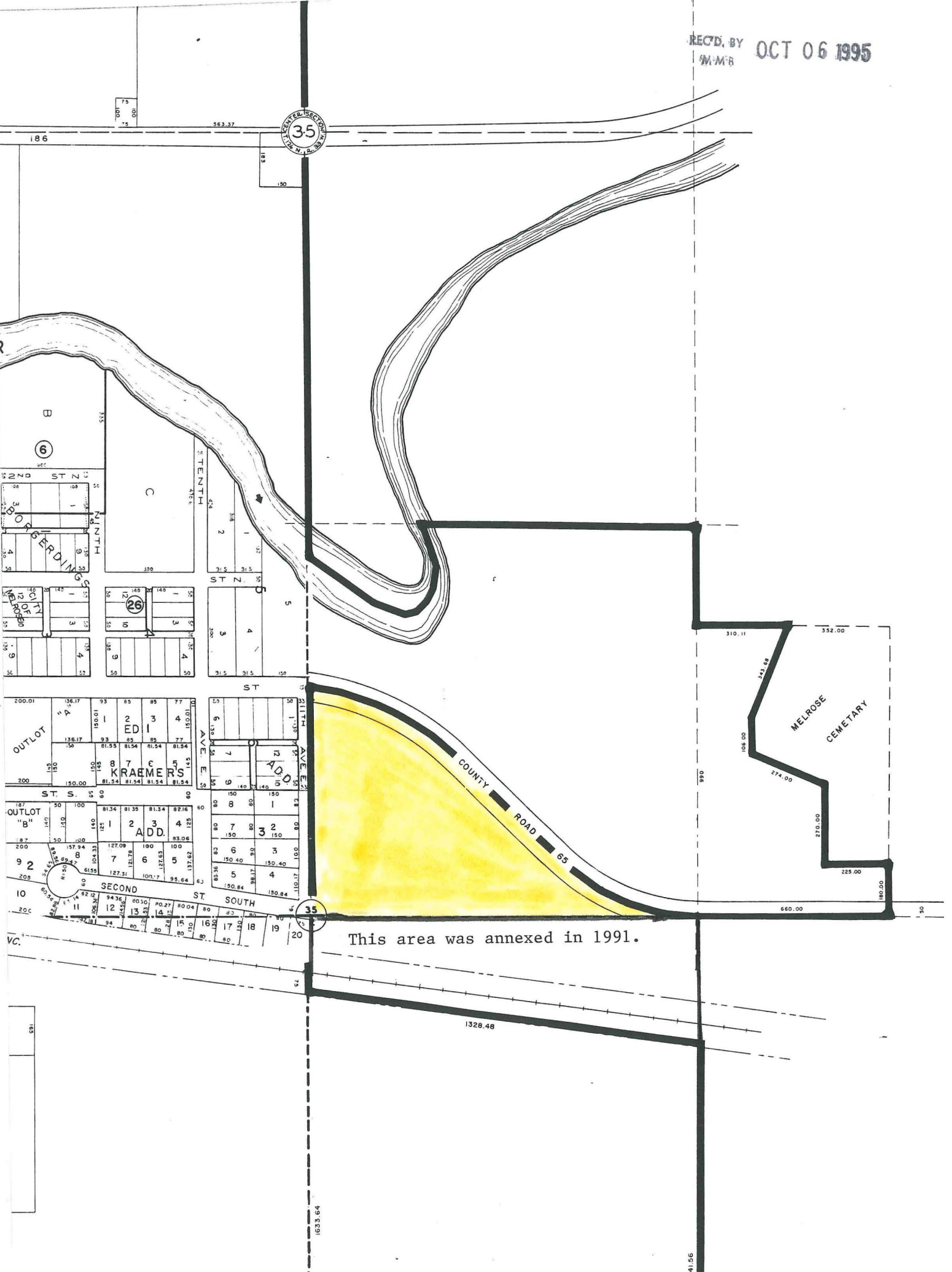


ROSE ANN INDERRIEDEN  
CITY CLERK-TREASURER

Published in the Melrose Beacon on the 2nd day of October, 1995.

REC'D. BY OCT 06 1995  
M.M.B

35  
N. 35. S. 35



This area was annexed in 1991.

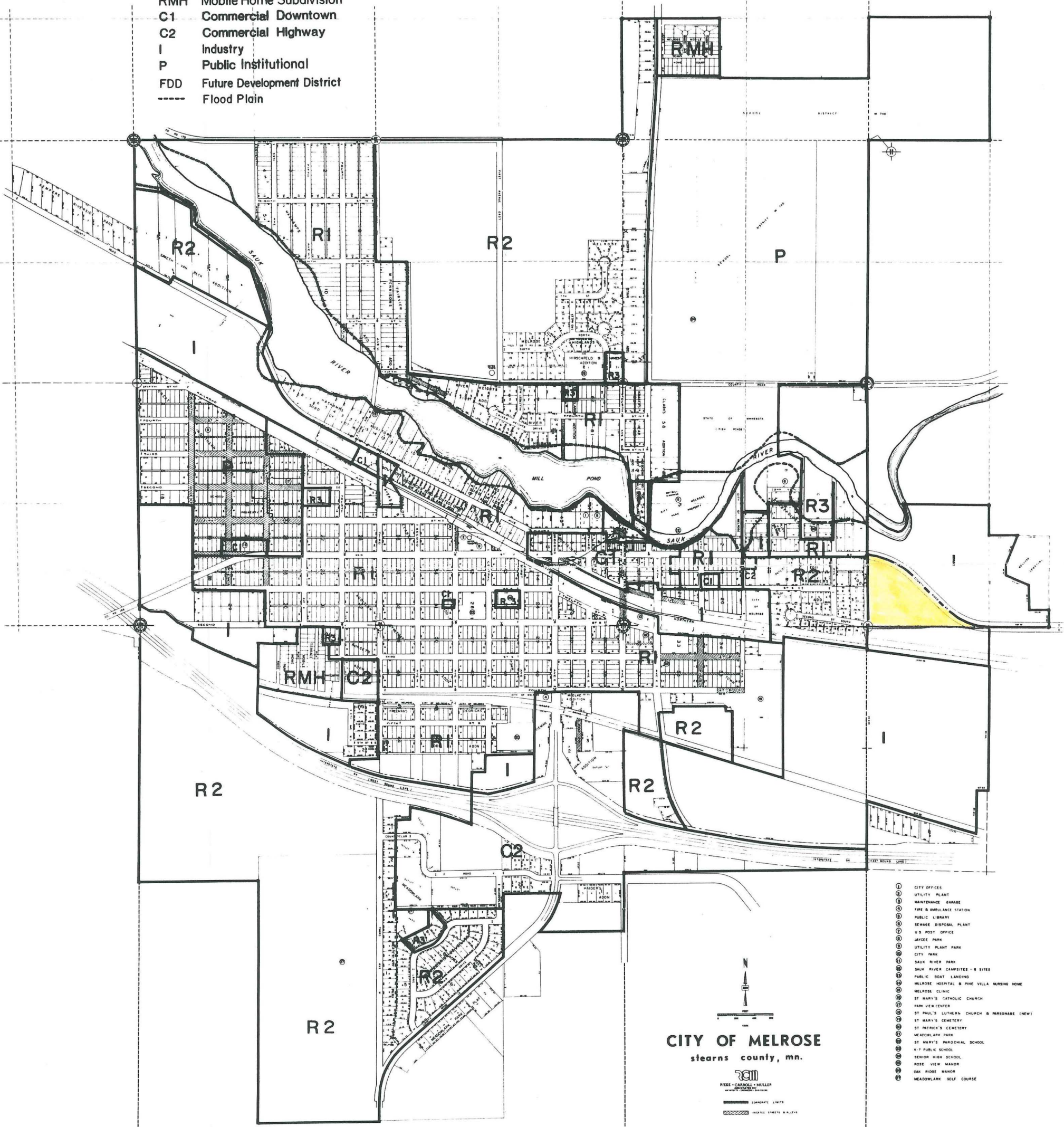
1328.48

1633.64

341.56

**ZONING DISTRICTS**

- R1 Residential
- R2 Moderate Density Residential
- R3 Multiple Family Residential
- RMH Mobile Home Subdivision
- C1 Commercial Downtown
- C2 Commercial Highway
- I Industry
- P Public Institutional
- FDD Future Development District
- Flood Plain



**CITY OF MELROSE**  
stearns county, mn.



RICKE-CARROLL-MULLER  
COMMUNITY PLANNERS

- ① CITY OFFICES
- ② UTILITY PLANT
- ③ MAINTENANCE GARAGE
- ④ FIRE & AMBULANCE STATION
- ⑤ PUBLIC LIBRARY
- ⑥ SEWAGE DISPOSAL PLANT
- ⑦ U.S. POST OFFICE
- ⑧ JAYCEE PARK
- ⑨ UTILITY PLANT PARK
- ⑩ CITY PARK
- ⑪ SAUK RIVER PARK
- ⑫ SAUK RIVER CAMPSITES - 8 SITES
- ⑬ PUBLIC BOAT LANDING
- ⑭ MELROSE HOSPITAL & PIKE VILLA NURSING HOME
- ⑮ MELROSE CLINIC
- ⑯ ST. MARY'S CATHOLIC CHURCH
- ⑰ PARK VIEW CENTER
- ⑱ ST. PAUL'S LUTHERAN CHURCH & PARSONAGE (NEW)
- ⑲ ST. MARY'S CEMETERY
- ⑳ ST. PATRICK'S CEMETERY
- ㉑ MEADOWLARK PARK
- ㉒ ST. MARY'S PAROCHIAL SCHOOL
- ㉓ K-7 PUBLIC SCHOOL
- ㉔ SENIOR HIGH SCHOOL
- ㉕ ROSE VIEW MANOR
- ㉖ OAK RIDGE MANOR
- ㉗ MEADOWLARK GOLF COURSE

POLICE 256-4247 or 256-7211  
FIRE 256-4247  
AMBULANCE 256-4231  
CITY HALL 256-4278  
CITY CLERK 256-3659  
CITY MAINTENANCE 256-4247  
UTILITY PLANT 256-4247

REC'D. BY  
MMB OCT 06 1995