

ORDINANCE NO. 37-95

AN ORDINANCE EXTENDING THE CORPORATE LIMITS OF THE
CITY OF ELYSIAN, MINNESOTA

WHEREAS, a Petition has been filed requesting that certain land known as Chesnut's Lakeshore Subdivision No. 2, legally described on the attached Exhibit A be annexed to the City of Elysian, Minnesota, per M.S. §414.033, Subd. 5, and

WHEREAS, the City Council of Elysian, Minnesota, determined said Petition to be in proper form and that the same was signed by a majority of the property owners in number, and

WHEREAS, the land proposed to be annexed is platted and less than 200 acres in size and is not included in any area that has been designated for orderly annexation pursuant to M.S. §414.0325, and

WHEREAS, the described tract of unincorporated property abuts the municipal limits of the City of Elysian, and

WHEREAS, such described land is now or about to become urban or suburban in character and that the same is residential property and in need of municipal sewer and water services, and

WHEREAS, a public hearing regarding the matter was held on Thursday, May 11, 1995 at 7:00 p.m., in the Elysian City Hall, per M.S. §414.033, Subd. 5

NOW, THEREFORE, the City of Elysian, Minnesota hereby ordains:

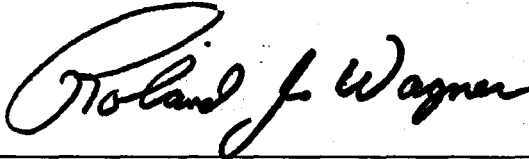
1. The corporate limits of the City of Elysian are hereby extended to include the property legally described on the attached Exhibit A and otherwise known and platted as Chesnut's Lakeshore Subdivision No. 2 and the same is hereby annexed to and included

within the City of Elysian as if the property had originally been part thereof.

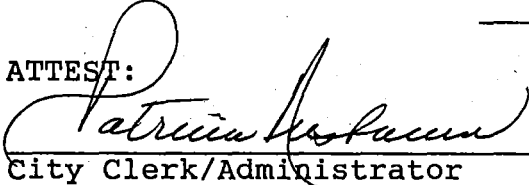
2. The City Administrator/Clerk is directed to file this Ordinance with the Minnesota Municipal Board, Elysian Township, the LeSueur County Auditor and the Minnesota Secretary of State per M.S. §414.033, Subd. 7.

3. This Ordinance takes effect upon its passage and publication and the filing of the same as directed in Section 2 herein and approval of the Ordinance by the Minnesota Municipal Board.

Adopted this 12th. day of June, 1995.



ATTEST:



City Clerk/Administrator

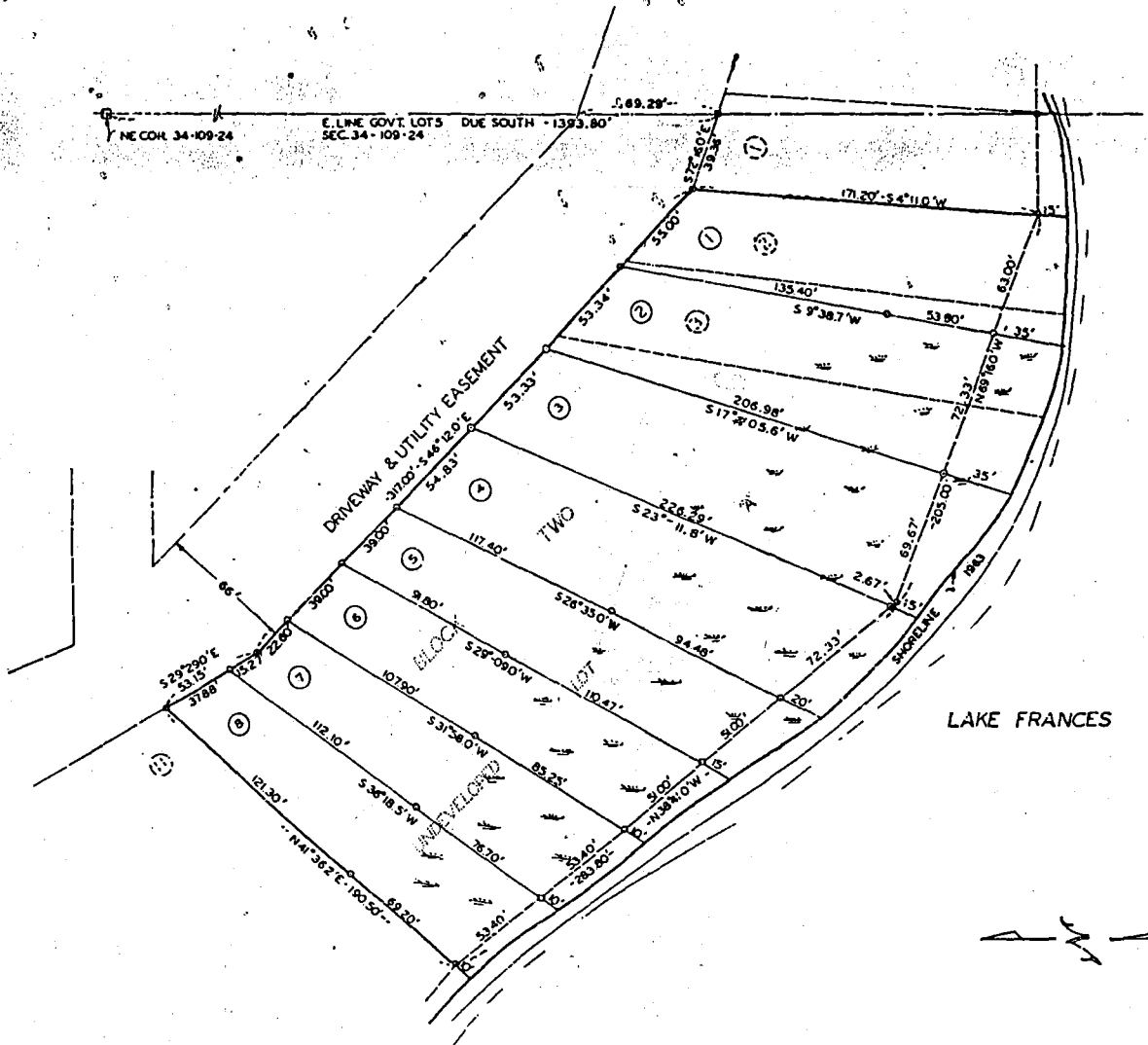
REC'D. BY JUN 26 1995
MMR

EXHIBIT A

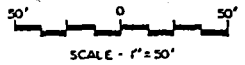
A re-arrangement of Lots 2 & 3, also the subdivision of undeveloped Lot A, all in Block 1 of Chestnut's Lakeshore Division, LeSueur County, Minnesota.

REC'D. BY JUN 26 1995
M M R

CHESNUT'S LAKESHORE SUBDIVISION NO. 2
A RE-ARRANGEMENT OF LOTS 2 & 3, ALSO THE SUB-
DIVISION OF UNDEVELOPED LOT A ALL IN BLOCK 2
OF CHESNUT'S LAKESHORE SUBDIVISION.
LE SUEUR COUNTY, MINNESOTA.



LAKE FRANCES



⊕ INDICATES IRON MONUMENT.
Wavy line INDICATES MARSH LAND.

SURVEY OF SUBDIVISION PREPARED
BEFORE MAY 18, 1967
NO MONUMENTS MARKED ACCORDING
TO MINNESOTA STATUTES 1067
SECTION 505.32

OWNERS CERTIFICATE

REC'D BY JUN 26 1995
M M B

Know all men by these presents that we, Charles W. Chesnut and Golda E. Chestnut, husband and wife, owners of the following described real estate to-wit:

Lots 2, 3 and Undeveloped Lot "A" of Block 2 of Chesnut's Lakeshore Subdivision, Le Sueur County.

do hereby declare that we have caused the above described property to be surveyed and platted and monuments to be set and that we have named said platted area CHESNUT'S LAKESHORE SUBDIVISION NO. 2 and that we dedicate the Driveways and Utility Easements to the owners of the property herein platted forever.

WITNESS:
John M. Wiese
H G Dressel

SIGNED:
Charles W. Chesnut
Golda E. Chestnut

NOTARY'S CERTIFICATE

State of Minnesota) as
County of Le Sueur)

On this the 18th day of August, 1966, before me, a Notary public, personally appeared the above named Charles W. Chesnut and Golda E. Chestnut, husband and wife, known by me to be the persons who executed the above instrument and who acknowledge the same to be their free act and deed.

H G Dressel
Notary Public, Le Sueur Co., Minn.
My Commission Expires Sept. 12, 1972

SURVEYOR'S CERTIFICATE

I, Martin C. Menk, Jr., Registered Land Surveyor, State of Minnesota, do hereby certify that this survey and plat was made at the request of the owners of the land platted, and that iron pipe monuments have been set as shown on the plat for the guidance of future surveys, and that all measurements are as shown and that there are no swamp areas or public highways within the platted area except as shown.

Martin C. Menk, Jr.
Reg. No. 3602

On this the 22nd day of August, 1966, before me a Notary Public in and for said County, appeared Martin C. Menk, Jr., who being duly sworn did say that he executed the foregoing instrument.

Cecelia D. Burke
Notary Public
CECELIA D. BURKE
Notary Public, Nicollet County, Minn.
My Commission Expires Aug. 30, 1971

APPROVAL

Be it known that on this the 10 day of October, 1966, the Board of County Commissioners of Le Sueur County, Minnesota, did duly approve and adopt this plat of CHESNUT'S LAKESHORE SUBDIVISION.

Russell Becker
Roger J. Wolf

APPROVAL

Be it known that on this the 9 day of October, 1966, the Planning Commission of Le Sueur County, Minnesota, did duly approve and adopt this plat of CHESNUT'S LAKESHORE SUBDIVISION.

Melani C. Johnson

MORTGAGEE'S CONSENT

The Elysian State Bank of Elysian, Minnesota, does hereby consent to this plat so far as its interest is concerned.

R. L. LaFrance
PRES. ELYSIAN STATE BANK
A C. R. P.

141100

REGISTER OF DEEDS
LE SUEUR COUNTY

I hereby certify that this instrument was filed in my office for record on this the 11th day of October, 1967, at 4 o'clock P.M. and that it was duly recorded on page 216 of book "B" of PLATS.

Amelia S. Purpura
Register of Deeds
Le Sueur County, Minnesota

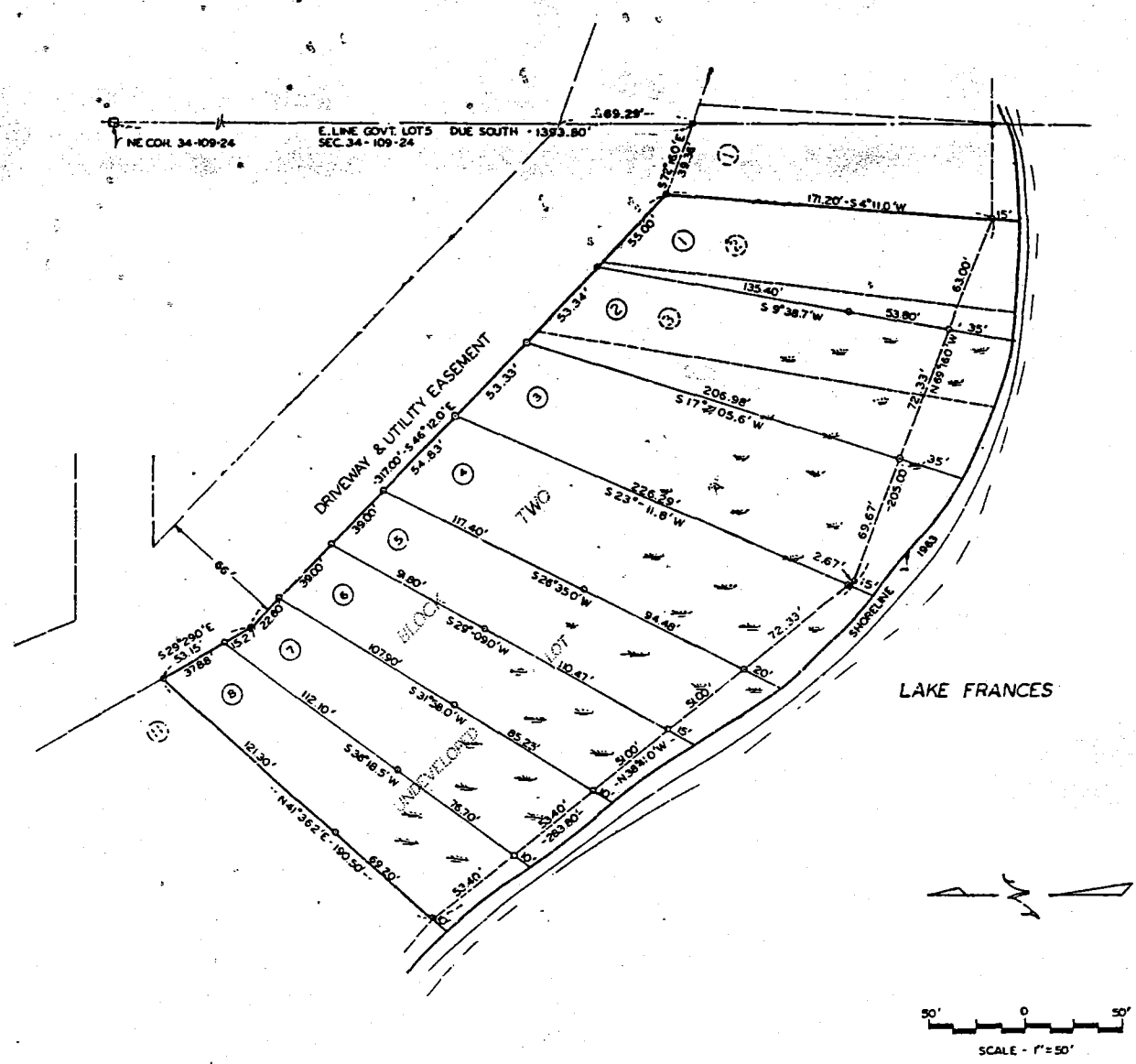
taxes paid
4 TRANSFER ENTERED
this 19th day of Oct, 1967
Russell Becker
County Auditor
Melani
Deputy

67 on the lands date
Robert P. Pruma

Charles Chesnut

REC'D. BY MAR 16 1995
MMR

CHESNUT'S LAKESHORE SUBDIVISION NO. 2
A RE-ARRANGEMENT OF LOTS 2 & 3, ALSO THE SUB-
DIVISION OF UNDEVELOPED LOT A ALL IN BLOCK 2
OF CHESNUT'S LAKESHORE SUBDIVISION.
LE SUEUR COUNTY, MINNESOTA.



INDICATES IRON MONUMENT.
INDICATES MARSH LAND.
SURVEY OF SUBDIVISION PREPARED
BEFORE MAY 18, 1967
NO MONUMENTS MARKED ACCORDING
TO MINNESOTA STATUTES 1967
SECTION 505.32

REC'D. BY MAR 16 1995
MMR

OWNERS CERTIFICATE

Know all men by these presents that we, Charles W. Chesnut and Golda E. Chesnut, husband and wife, owners of the following described real estate to-wit:
Lots 2, 3 and Undeveloped Lot "A" of Block 2 of Chesnut's Lakeshore Subdivision, Le Sueur County.
do hereby declare that we have caused the above described property to be surveyed and platted and monuments to be set and that we have named said platted area CHESNUT'S LAKESHORE SUBDIVISION NO. 2 and that we dedicate the Driveways and Utility Easements to the owners of the property herein platted forever.

WITNESS: Helen M. Wiers
H. G. Drossel
SIGNED: Charles W. Chesnut
Golda E. Chesnut

NOTARY'S CERTIFICATE

State of Minnesota) ss
County of Le Sueur) ss
On this the 18th day of August, 1966, before me, a Notary public, personally appeared the above named Charles W. Chesnut and Golda E. Chesnut, husband and wife, known by me to be the persons who executed the above instrument and who acknowledge the same to be their free act and deed.
H. G. Drossel
Notary Public, Le Sueur Co., Minn.
My Commission Expires Aug. 12, 1972

SURVEYOR'S CERTIFICATE

I, Martin C. Menk, Jr., Registered Land Surveyor, State of Minnesota, do hereby certify that this survey and plat was made at the request of the owners of the land platted, and that iron pipe monuments have been set as shown on the plat for the guidance of future surveys, and that all measurements are as shown and that there are no swamp areas or public highways within the platted area except as shown.
Martin C. Menk, Jr.
Reg. No. 3602

On this the 27 day of August, 1966, before me a Notary Public in and for said County, appeared Martin C. Menk, Jr., who being duly sworn did say that he executed the foregoing instrument.

Cecelia D. Burke
Notary Public
Cecelia D. Burke
Notary Public, Nicollet County, Minn.
My Commission Expires Aug. 30, 1972

Be it known that on this the 10 day of October, 1966, the Board of County Commissioners of Le Sueur County, Minnesota, did duly approve and adopt this plat of CHESNUT'S LAKESHORE SUBDIVISION.

Russell Becker
Reginald Wolf

Be it known that on this the 9 day of October, 1966, the Planning Commission of Le Sueur County, Minnesota, did duly approve and adopt this plat of CHESNUT'S LAKESHORE SUBDIVISION.

Melvin E. Johnson

MORTGAGEE'S CONSENT

The Elysian State Bank of Elysian, Minnesota, does hereby consent to this plat so far as its interest is concerned.

R. L. LaFrance
PRES. ELYSIAN STATE BANK
A CORP.
REGISTER OF DEEDS
LE SUEUR COUNTY

141:00

I hereby certify that this instrument was filed in my office for record on this the 11th day of October, 1967, at 4 o'clock P.M. and that it was duly recorded on page 216 of book "B" of PLATS.

Amelia S. Pappas
Register of Deeds
Le Sueur County, Minnesota

taxes paid
TRANSFER ENTERED
FILED
Robert P. Puma
County Auditor

CHARLES CHESNUT

ORIGINAL

LECTD. BY MAR 16 1995
MMB

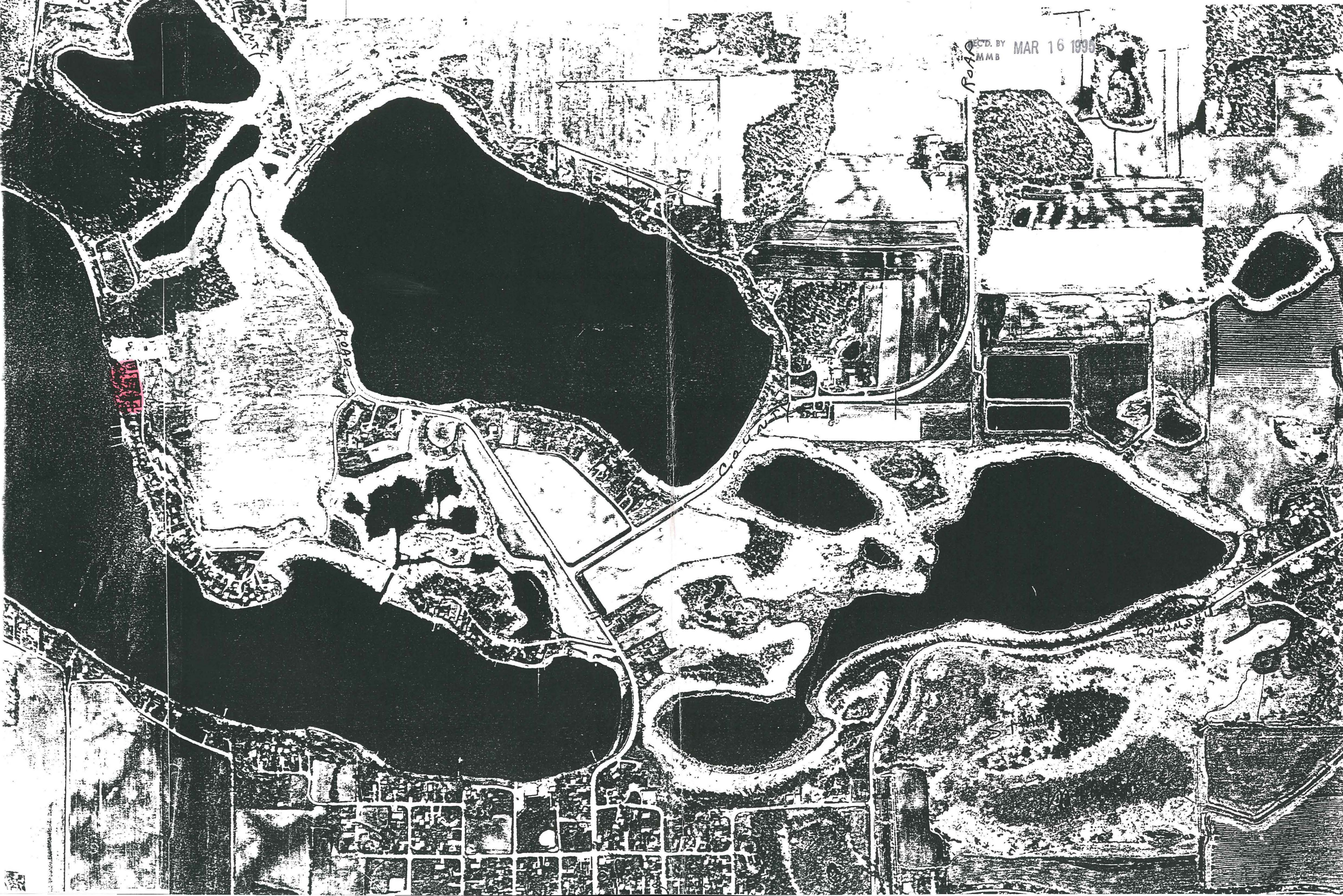
ROAD

ROAD

COUNTY

TOWNSHIP

ST





Road

Country

ST