

ORDINANCE NO. 217

AN ORDINANCE EXTENDING THE CORPORATE LIMITS OF THE CITY OF STEWARTVILLE TO INCLUDE CERTAIN UNINCORPORATED, UNPLATTED LAND NOT EXCEEDING SIXTY (60) ACRES IN AREA ABUTTING UPON THE CITY LIMITS.

WHEREAS, a Petition dated the 12th day of July, 1994, requesting annexation of the territory hereinafter described was duly presented to the Council the 12th day of July, 1994 and

WHEREAS, a quantity of land embraced within the area described in the Petition and bounded as described is 40 acres more or less of unplatted land, no part of which is included within the limits of an incorporated city; and

WHEREAS, the petition was signed by the owner of the property and

WHEREAS, no objections to the annexation have been received from the Township Board or the governing body of any Municipality whose boundaries abut upon the boundaries of the lands to be annexed; and

WHEREAS, the land described in the Petition abuts the City limits at the Northeast corner and the Southeast corner of the parcel;

Section 1:

The Council of the City of Stewartville hereby determines:

1. That the annexation will be to the best interest of the City and of the territory affected;
2. That the territory described herein abuts upon the City limits and is about to become urban or suburban in character;
3. That none of said territory is now included within the limits of any City or Borough.

Section 2:

Territory Annexed:

The corporate limits of the City are hereby extended to include the unplatted land described as follows and the same is hereby annexed to and included within the City as effectually as if it had originally been a part thereof:

THE NW 1/4 OF THE SW 1/4 OF SECTION 27, TOWNSHIP 105,  
RANGE 14, OLMSTED COUNTY, MINNESOTA

RECEIVED  
M M R OCT 20 1994

Section 3:

Filing:

The City Clerk is hereby directed to file certified copies of this Ordinance with the Minnesota Municipal Commission, the Secretary of State, the Township clerk, and County Auditor.

Section 4:

Effective Date:

This ordinance takes effect upon its passage and publication and the filing of the certified copies as directed in Section 3, and approved from the Minnesota Municipal Board.

Adopted by the City Council of Stewartville, MN this 11<sup>th</sup> day of October, 1994.

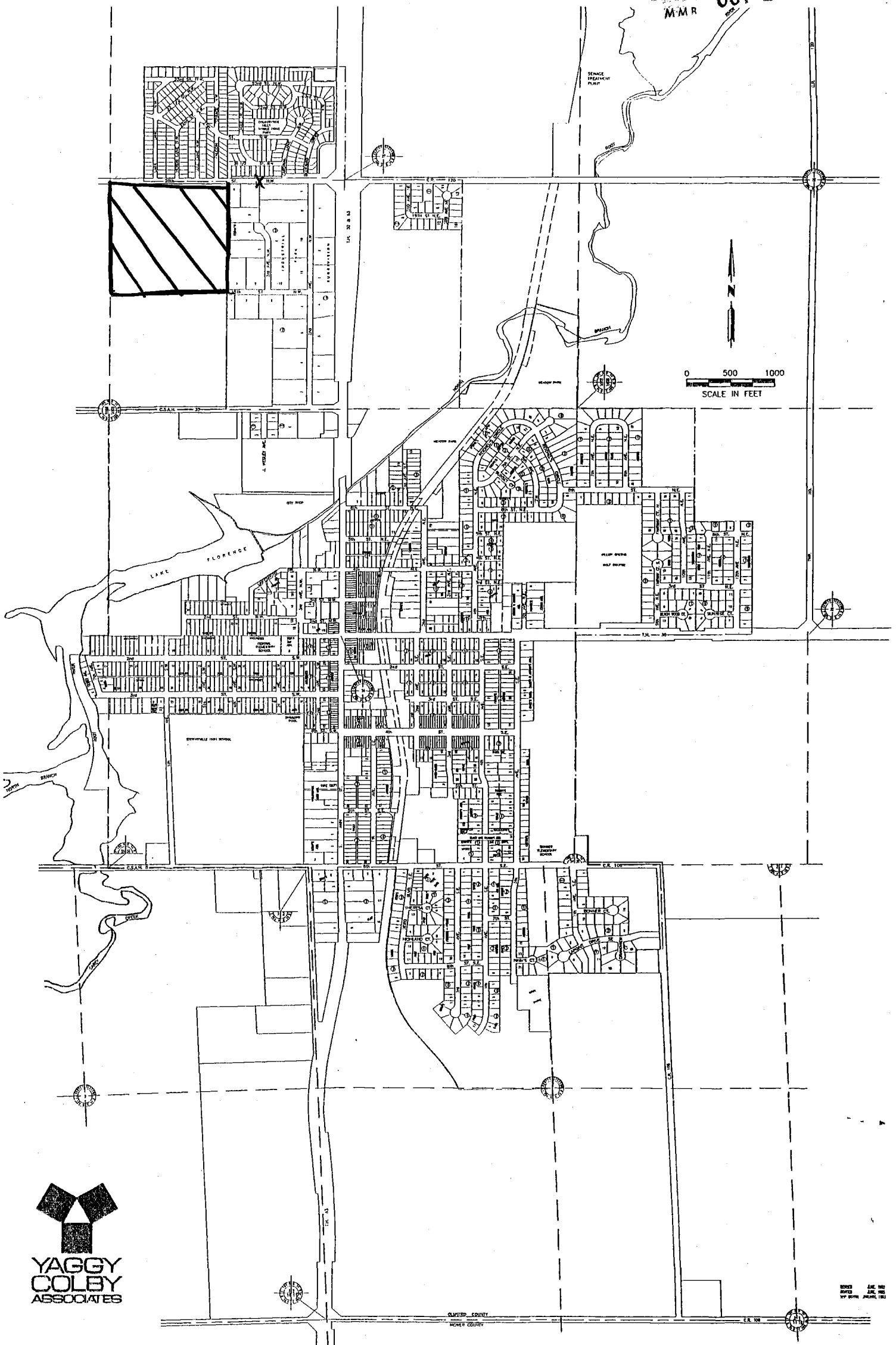
Larry Gray  
Larry Gray, Mayor

ATTEST:

Larry D. Hansen  
Larry D. Hansen  
City Administrator

# CITY OF STEWARTVILLE, MINNESOTA

REC'D BY OCT 21 1994  
M-M R



YAGGY  
COLBY  
ASSOCIATES

100  
100  
100