

ORDINANCE NO. 93-91

AN ORDINANCE OF THE CITY OF HUTCHINSON, COUNTY OF MCLEOD,
STATE OF MINNESOTA, INCORPORATING AND ANNEXING CERTAIN
TRACTS AND PARCELS OF LAND INTO THE CITY OF HUTCHINSON
AS MORE PARTICULARLY SET OUT IN SAID ORDINANCE

WHEREAS, certain parcels of land as more particularly
described abut or adjoin the City of Hutchinson;

WHEREAS, the Minnesota Municipal Board pursuant to Minnesota
Statutes Chapter 414 has approved the following annexation;

WHEREAS, it would be in the public interest to annex and
incorporate said lands into the City of Hutchinson;

NOW THEREFORE, the City of Hutchinson does ordain:

SECTION 1. That the lands hereafter described shall be, and
the same hereby are, annexed to the City of Hutchinson, a Minnesota
municipal corporation, located in the County of McLeod and State of
Minnesota and from and after passage and publication of this
ordinance, said lands shall be annexed to and become a part of and
included in the corporate limits of the City of Hutchinson:

Auditor's Plat, Section 7-116-29, Lot 1, Except East
378.2' (3.00 acres)

Auditor's Plat, Section 7-116-29, East 378.2' of Lot 1
(6.81 acres).

Total of 9.81 acres of land.

SECTION 2. This Ordinance shall become effective from and
after publication.

Adopted by the City Council this 28th day of September, 1993.

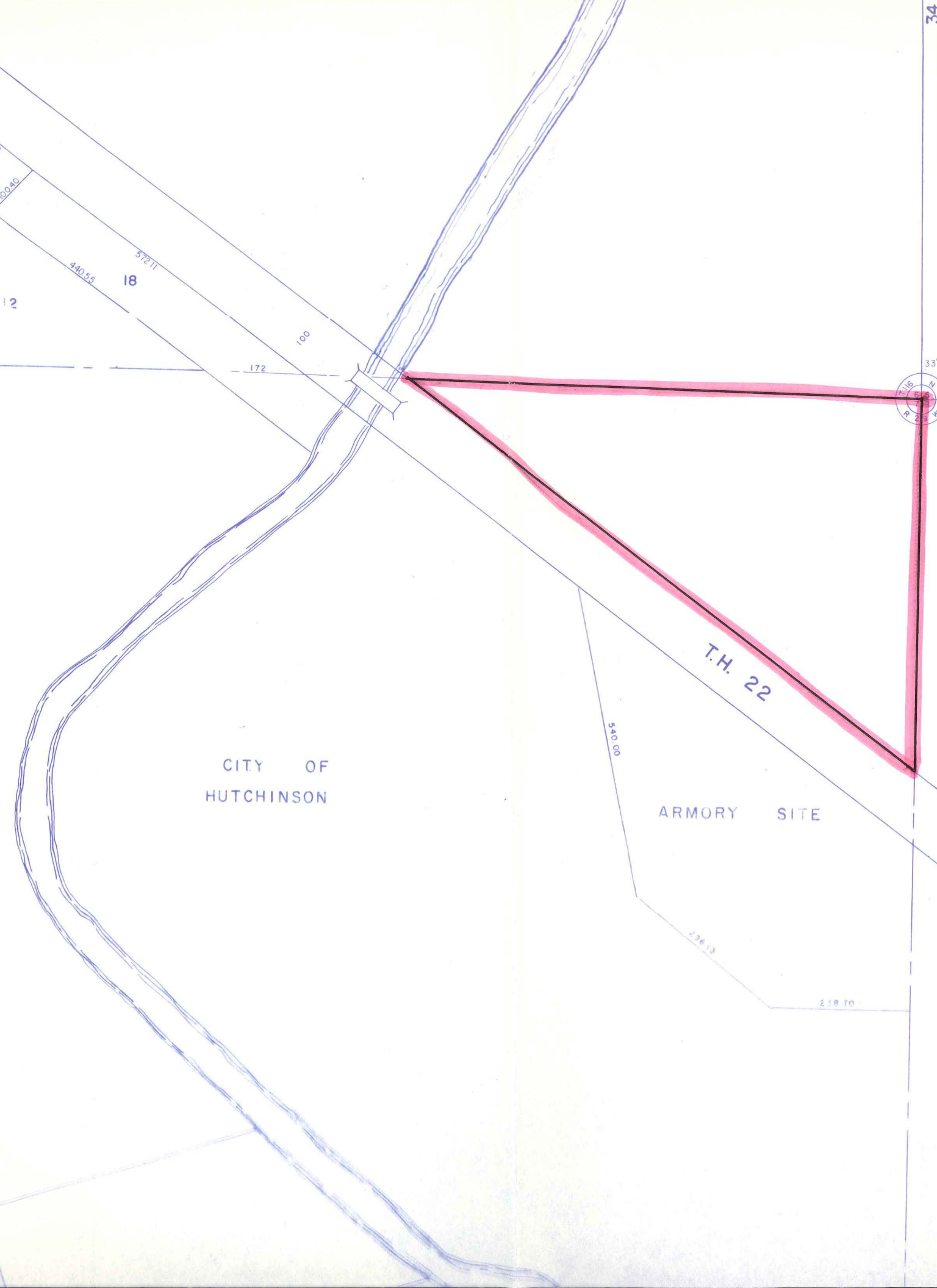


Paul L. Ackland
Mayor

ATTEST:



Gary D. Plotz
City Administrator



REC'D. BY
M.M.B. NOV 02 1993