

444 110 1993

ORDINANCE NO. 244

AN ORDINANCE ANNEXING
VOLKMUTH PROPERTY TO THE
CITY OF WAITE PARK

The City Council, Waite Park, Minnesota, ordains as follows:

1. That the City has been petitioned by the sole owners of certain property lying in Stearns County, Minnesota, legally described as follows, to wit:

The north 230.00 feet of the Southeast Quarter of the Southwest Quarter (SE $\frac{1}{4}$ SW $\frac{1}{4}$), Section 17, Township 124 North, Range 28 West, Stearns County, Minnesota. Containing 6.965 acres and subject to a roadway easement over the easterly part thereof.

2. Pursuant to Minn. Stat. § 414.033, Subd. 2, the City Council is empowered to annex the property without further notice in the event the land is requested to be annexed by the owners of the property, it immediately abuts the property and is less than 60 acres.

3. The City of Waite Park, by power vested pursuant to Minnesota law, does hereby annex the property referred to in Paragraph 1 of this Ordinance.

4. The City Clerk is directed to file a copy of this Ordinance with the Secretary of State, the Executive Director of the Minnesota Municipal Board, the State Auditor, and the Town Clerk for the Township of St. Cloud.

This Ordinance shall become effective upon passage, publication and filing with the Minnesota Municipal Board.

Dated this 19th day of July, 1993.

CITY OF WAITE PARK

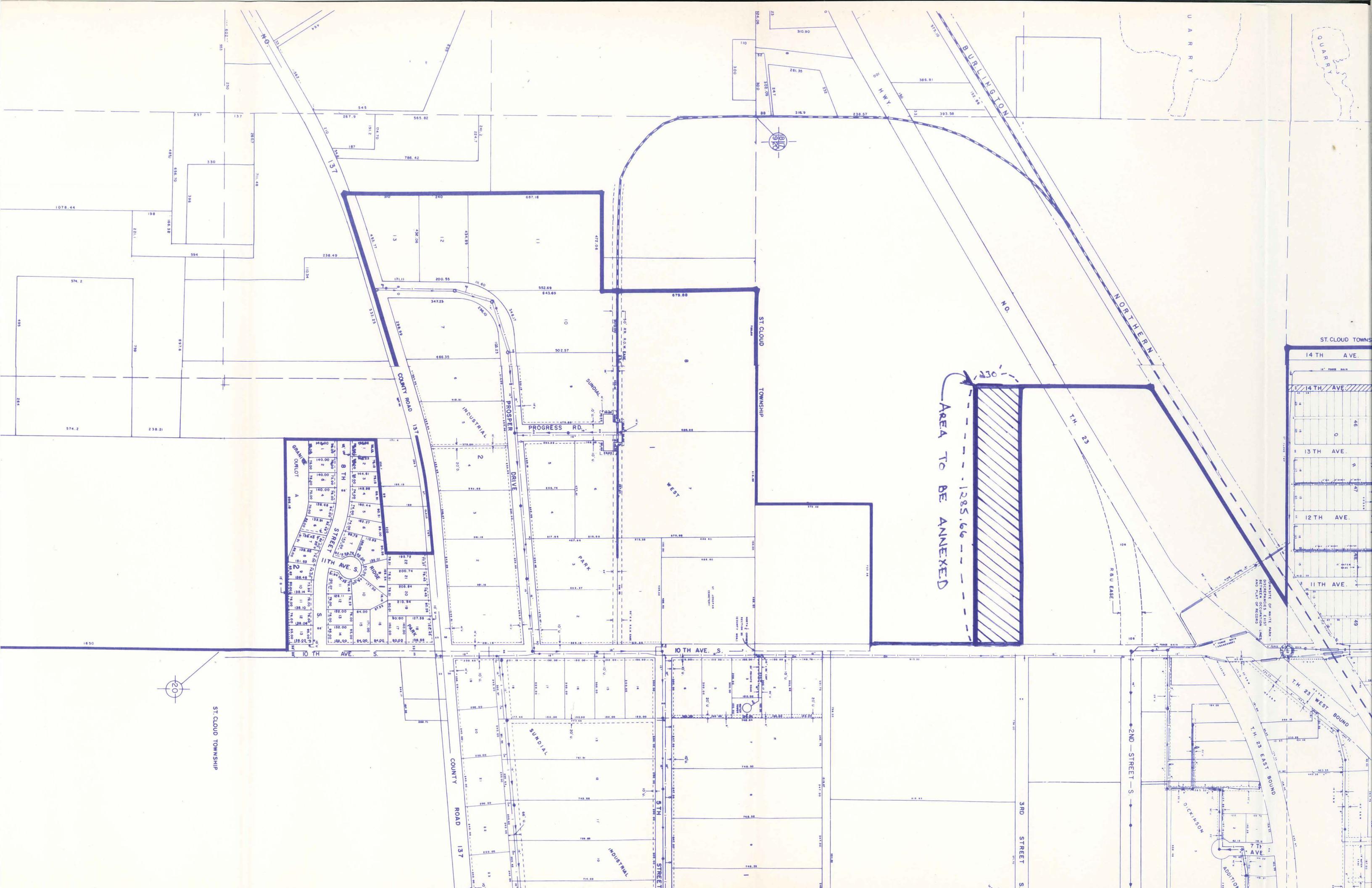
Alcuin J. Ringsmuth
Alcuin J. Ringsmuth, Mayor

ATTEST:

Jeffrey J. Baird
Jeffrey J. Baird, City Clerk

Published in the St. Cloud Daily Times on the ____ day of _____, 1993.

Jeffrey J. Baird
Jeffrey J. Baird, City Clerk



AREA TO BE ANNEXED

ST. CLOUD TOWNSHIP



ST. CLOUD TOWNSHIP

14TH AVE.

14TH AVE.

13TH AVE.

12TH AVE.

11TH AVE.

10TH AVE.

9TH AVE.

8TH AVE.

7TH AVE.

6TH AVE.

5TH AVE.

4TH AVE.

3TH AVE.

2TH AVE.

1TH AVE.

10TH AVE. S.

11TH AVE. S.

12TH AVE. S.

13TH AVE. S.

14TH AVE. S.

15TH AVE. S.

16TH AVE. S.

17TH AVE. S.

18TH AVE. S.

19TH AVE. S.

20TH AVE. S.

21ST AVE. S.

22ND AVE. S.

23RD AVE. S.

24TH AVE. S.

25TH AVE. S.

26TH AVE. S.

27TH AVE. S.

28TH AVE. S.

29TH AVE. S.

30TH AVE. S.

31ST AVE. S.

32ND AVE. S.

33RD AVE. S.

34TH AVE. S.

35TH AVE. S.

36TH AVE. S.

37TH AVE. S.

38TH AVE. S.

39TH AVE. S.

40TH AVE. S.

41ST AVE. S.

42ND AVE. S.

43RD AVE. S.

44TH AVE. S.

45TH AVE. S.

46TH AVE. S.

47TH AVE. S.

48TH AVE. S.

49TH AVE. S.

50TH AVE. S.

51ST AVE. S.

52ND AVE. S.

53RD AVE. S.

54TH AVE. S.

55TH AVE. S.

56TH AVE. S.

57TH AVE. S.

58TH AVE. S.

59TH AVE. S.

60TH AVE. S.

61ST AVE. S.

62ND AVE. S.

63RD AVE. S.

64TH AVE. S.

65TH AVE. S.

66TH AVE. S.

67TH AVE. S.

68TH AVE. S.

69TH AVE. S.

70TH AVE. S.

71ST AVE. S.

72ND AVE. S.

73RD AVE. S.

74TH AVE. S.

75TH AVE. S.

76TH AVE. S.

77TH AVE. S.

78TH AVE. S.

79TH AVE. S.

80TH AVE. S.

81ST AVE. S.

82ND AVE. S.

83RD AVE. S.

84TH AVE. S.

85TH AVE. S.

86TH AVE. S.

87TH AVE. S.

88TH AVE. S.

89TH AVE. S.

90TH AVE. S.

91ST AVE. S.

92ND AVE. S.

93RD AVE. S.

94TH AVE. S.

95TH AVE. S.

96TH AVE. S.

97TH AVE. S.

98TH AVE. S.

99TH AVE. S.

100TH AVE. S.