

REC'D. BY
MAR 30 1993

ORDINANCE NO. 93-75

AN ORDINANCE OF THE CITY OF HUTCHINSON, COUNTY OF MCLEOD,
STATE OF MINNESOTA, INCORPORATING AND ANNEXING CERTAIN
TRACTS AND PARCELS OF LAND INTO THE CITY OF HUTCHINSON
AS MORE PARTICULARLY SET OUT IN SAID ORDINANCE

WHEREAS, certain parcels of land as more particularly
described abut or adjoin the City of Hutchinson;

WHEREAS, the Minnesota Municipal Board pursuant to Minnesota
Statutes Chapter 414 has approved the following annexation;

WHEREAS, it would be in the public interest to annex and
incorporate said lands into the City of Hutchinson;

NOW, THEREFORE, the City of Hutchinson does ordain:

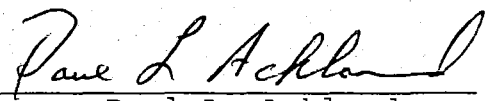
SECTION 1. That the lands hereafter described shall be, and
the same hereby are, annexed to the City of Hutchinson, a Minnesota
municipal corporation, located in the County of McLeod and State of
Minnesota and from and after passage and publication of this
ordinance, said lands shall be annexed to and become a part of and
included in the corporate limits of the City of Hutchinson:

See attached legal description.

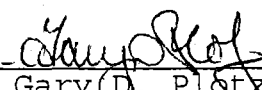
Total of 12.72 acres of land.

SECTION 2. This Ordinance shall become effective from and
after publication.

Adopted by the City Council this 23rd day of March, 1993.


Paul L. Ackland
Mayor

ATTEST:


Gary D. Plotz
City Administrator

All that part of the South Half of Section 2, Township 116 North, Range 30 West, McLeod County, Minnesota described as follows: Commencing at the Southeast corner of said Section 2; thence on a bearing of South 89° 54' 10" West along the South line of said Section 2, a distance of 1972.18 feet; thence North 0° 41' 50" West, a distance of 1328.81 feet to the point of beginning; thence South 89° 54' 10" West, a distance of 899.21 feet; thence North 3° 37' 10" East; a distance of 103.94 feet; thence South 86° 43' 20" West, a distance of 322.60 feet; thence North 2° 48' 55" West, a distance of 283.31 feet; thence South 89° 40' West, a distance of 254.97 feet; thence North 15° 36' East, a distance of 68.64 feet; thence North 89° 40' East, a distance of 1459.87 feet; thence South 0° 41' 50" East, a distance of 432.49 feet to the point of beginning. Subject to a roadway easement over the Easterly 33 feet of said tract. Containing 12.72 acres more or less.

EXCEPT

Commencing at the southeast corner of said Section 2; thence South 89 degrees 54 minutes 10 seconds West, assumed bearing, along the south line of the Southeast Quarter of said Section 2 a distance of 1972.18 feet; thence North 0 degrees 41 minutes 50 seconds West a distance of 1328.81 feet; thence South 89 degrees 54 minutes 10 seconds West a distance of 899.21 feet; thence North 3 degrees 37 minutes 10 seconds East a distance of 103.94 feet; thence South 86 degrees 43 minutes 20 seconds West a distance of 322.60 feet; thence North 2 degrees 48 minutes 55 seconds West a distance of 211.20 feet to the point of beginning of the land to be described; thence continuing North 2 degrees 48 minutes 55 seconds West a distance of 72.11 feet; thence South 89 degrees 40 minutes 00 seconds West a distance of 254.97 feet; thence North 15 degrees 36 minutes 00 seconds East a distance of 68.64 feet; thence North 89 degrees 40 minutes 00 seconds East a distance of 295.84 feet; thence South 28 degrees 20 minutes 28 seconds West a distance of 16.41 feet thence southwesterly 121.09 feet along a tangential curve concave to the southeast, having a radius of 527.93 feet and a central angle of 13 degrees 08 minutes 28 seconds; thence South 15 degrees 12 minutes 00 seconds West, tangent to said curve, a distance of 12.16 feet to the point of beginning.

* * * * *

AND

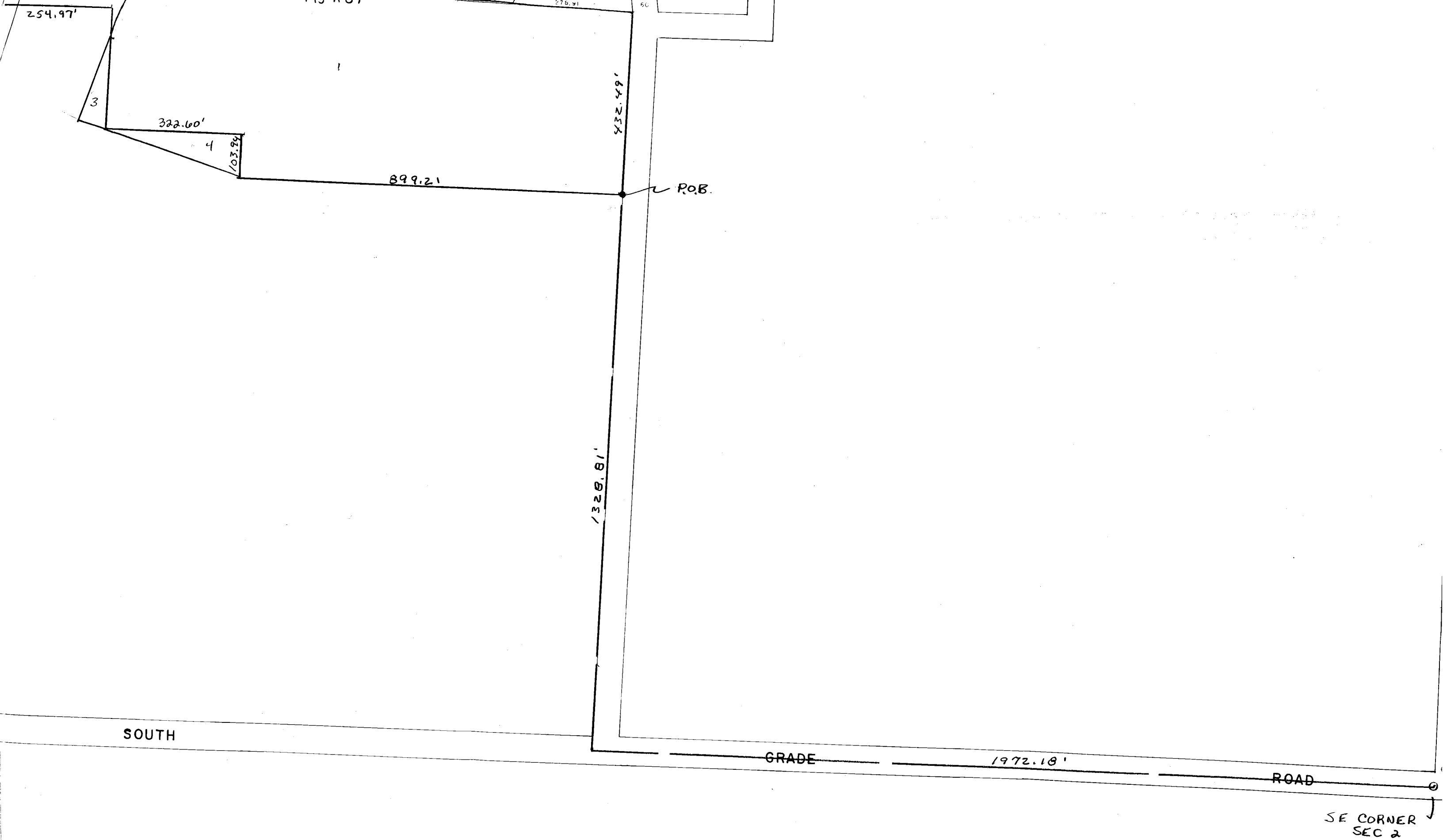
That part of the South Half of Section 2, Township 116 North, Range 30 West of the 5th Principal Meridian described as follows:

Commencing at the southeast corner of said Section 2; thence South 89 degrees 54 minutes 10 seconds West, assumed bearing along the south line of the Southeast Quarter of said Section 2 a distance of 1972.18 feet; thence North 0 degrees 41 minutes 50 seconds West a distance of 1328.81 feet; thence South 89 degrees 54 minutes 10 seconds West a distance of 899.21 feet; thence North 3 degrees 37 minutes 10 seconds East a distance of 103.94 feet; thence South 86 degrees 43 minutes 20 seconds West a distance of 322.60 feet to the point of beginning of the land to be described; thence North 2 degrees 48 minutes 55 seconds West a distance of 211.20 feet; thence South 15 degrees 12 minutes 00 seconds West a distance of 200.92 feet; thence South 74 degrees 52 minutes 25 seconds East a distance of 65.32 feet to the point of beginning.

AND

That part of the South Half of Section 2, Township 116 North, Range 30 West of the 5th Principal Meridian described as follows:

Commencing at the southeast corner of said Section 2; thence South 89 degrees 54 minutes 10 seconds West, assumed bearing, along the south line of the Southeast Quarter of said Section 2 a distance of 1972.18 feet; thence North 0 degrees 41 minutes 50 seconds West a distance of 1328.81 feet; thence South 89 degrees 54 minutes 10 seconds West a distance of 899.21 feet to the point of beginning of the land to be described; thence North 3 degrees 37 minutes 10 seconds East a distance of 103.94 feet; thence South 86 degrees 43 minutes 20 seconds West a distance of 322.60 feet; thence South 74 degrees 52 minutes 25 seconds East a distance of 326.83 feet to the point of beginning.



REC'D BY
BMB
MAR 05 1993

