

PUBLICATION NO. 4469

ORDINANCE NO. 92-73

AN ORDINANCE OF THE CITY OF HUTCHINSON, COUNTY OF MCLEOD,
STATE OF MINNESOTA, INCORPORATING AND ANNEXING CERTAIN
TRACTS AND PARCELS OF LAND INTO THE CITY OF HUTCHINSON
AS MORE PARTICULARLY SET OUT IN SAID ORDINANCE

WHEREAS, certain parcels of land as more particularly
described below abut or adjoin the City of Hutchinson;

WHEREAS, the Minnesota Municipal Board pursuant to Minnesota
Statutes Chapter 414 has approved the following annexation;

WHEREAS, it would be in the public interest to annex and
incorporate said lands into the City of Hutchinson;

NOW, THEREFORE, the City of Hutchinson does ordain:

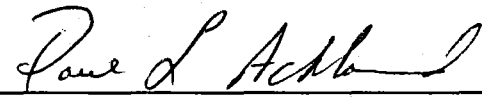
SECTION 1. That the lands hereafter described shall be, and
the same hereby are, annexed to the City of Hutchinson, a Minnesota
municipal corporation, located in the County of McLeod and State of
Minnesota and from and after passage and publication of this
ordinance, said lands shall be annexed to and become a part of and
included in the corporate limits of the City of Hutchinson:

The Northerly 914.40 feet of Lot 6 of Auditor's Plat of
West half of Section 32, Township 117 North, Range 29
West, as measured at a right angle to the North line of
said Lot 6.

Total of 12.03 acres of land.

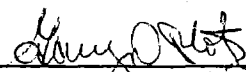
SECTION 2. This Ordinance shall become effective from and
after publication.

Adopted by the City Council this 8th day of December, 1992.

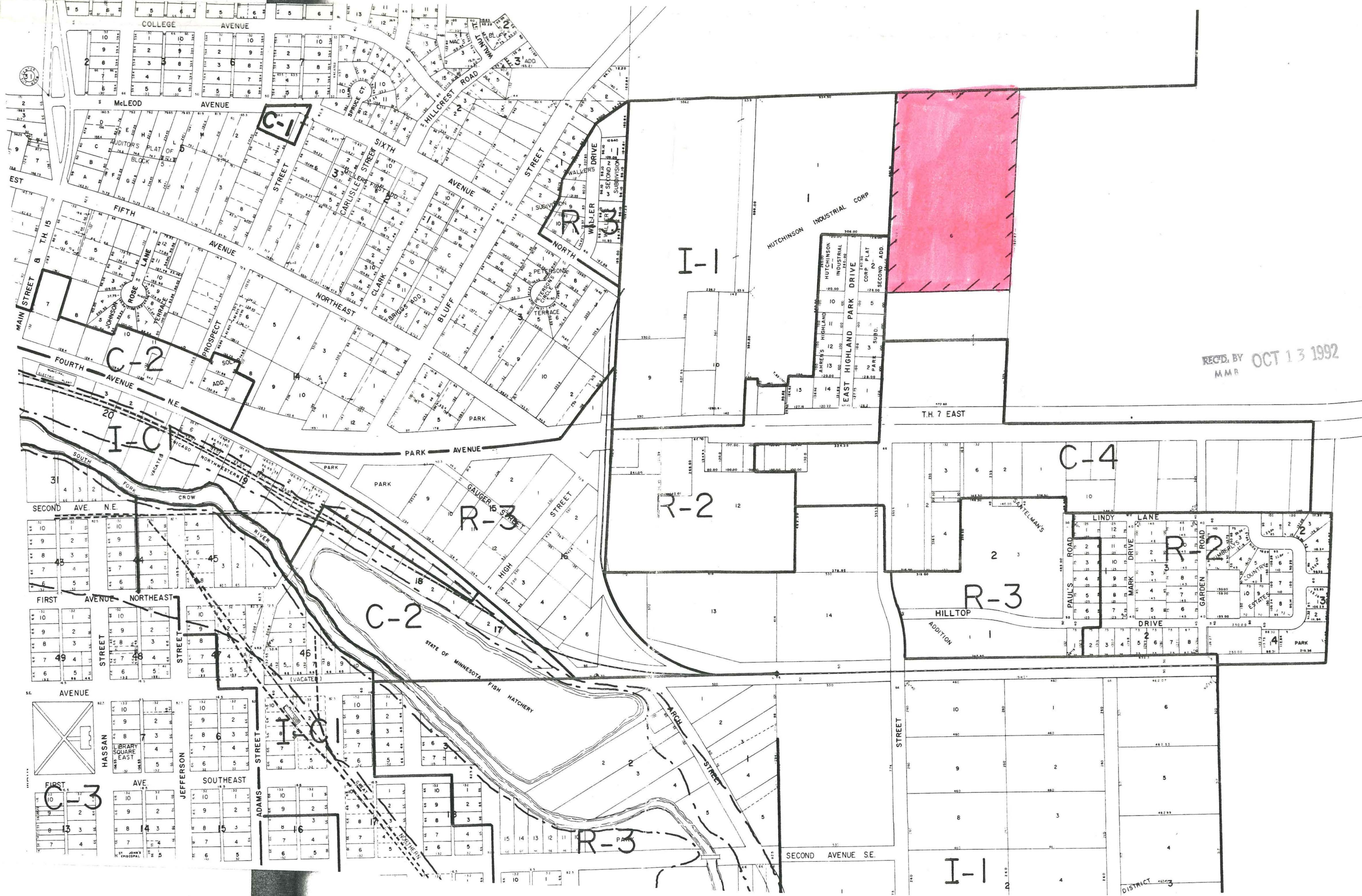


Paul L. Ackland
Mayor

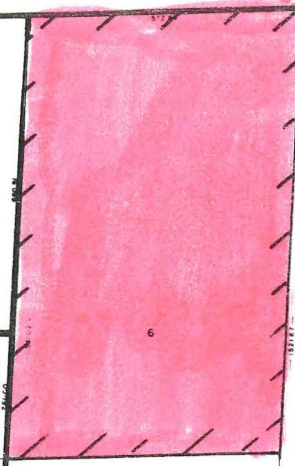
ATTEST:



Gary D. Plotz
City Administrator



REC'D. BY OCT 13 1992
MMR



I-1

HUTCHINSON INDUSTRIAL CORP

HUTCHINSON INDUSTRIAL CORP
HUTCHINSON INDUSTRIAL CORP PLAT
EAST HIGHLAND PARK DRIVE
CORP. PLAT
SECOND ADD.

T.H. 7 EAST

C-4

R-2

R-3

R-3

HILLTOP
ADDITION

C-2

STATE OF MINNESOTA FISH HATCHERY

R-3

SECOND AVENUE SE.

I-1

DISTRICT 3