

RESOLUTION

WHEREAS the City of LaPrairie has received a petition for annexation of land abutting the City of LaPrairie;

WHEREAS the petition is submitted by Carol Simonson, owner of the East Half (E.½) of Lot Seven (7), Lot Eight (8), HOOLIHAN'S SECOND ADDITION TO GRAND RAPIDS.

WHEREAS the Simonson land abuts the City of LaPrairie and is urban in character;

WHEREAS the City of LaPrairie agrees upon annexation to extend municipal sewer services and water services to the annexed area;

WHEREAS the proposed annexed parcel is surrounded sixty percent (60%) or more by the City and is less than forty (40) acres;

THEREFORE BE IT RESOLVED that the City of LaPrairie does hereby accept the petition for annexation and states that it intends to annex said parcel by Ordinance Number 31 which is attached hereto.

Further after due notice and the time for objection has passed or waiver of such is received the city intends to annex by ordinance.

Dated this 13th day of August, 1991.

CITY OF LAPRAIRIE

BY: *R. Herdman*
Robert Herdman, Mayor

ATTEST: *Nancy Gimpl*
Nancy Gimpl, Clerk

REC'D. BY SEP. 12 1991
M M B

HOOIHAN'S SECOND ADDITION TO GR ITASCA COUNTY, MINNESOTA

TOWNSHIP 55N, R25W of 4th P. M.

A Part of Lot 2, Section 22

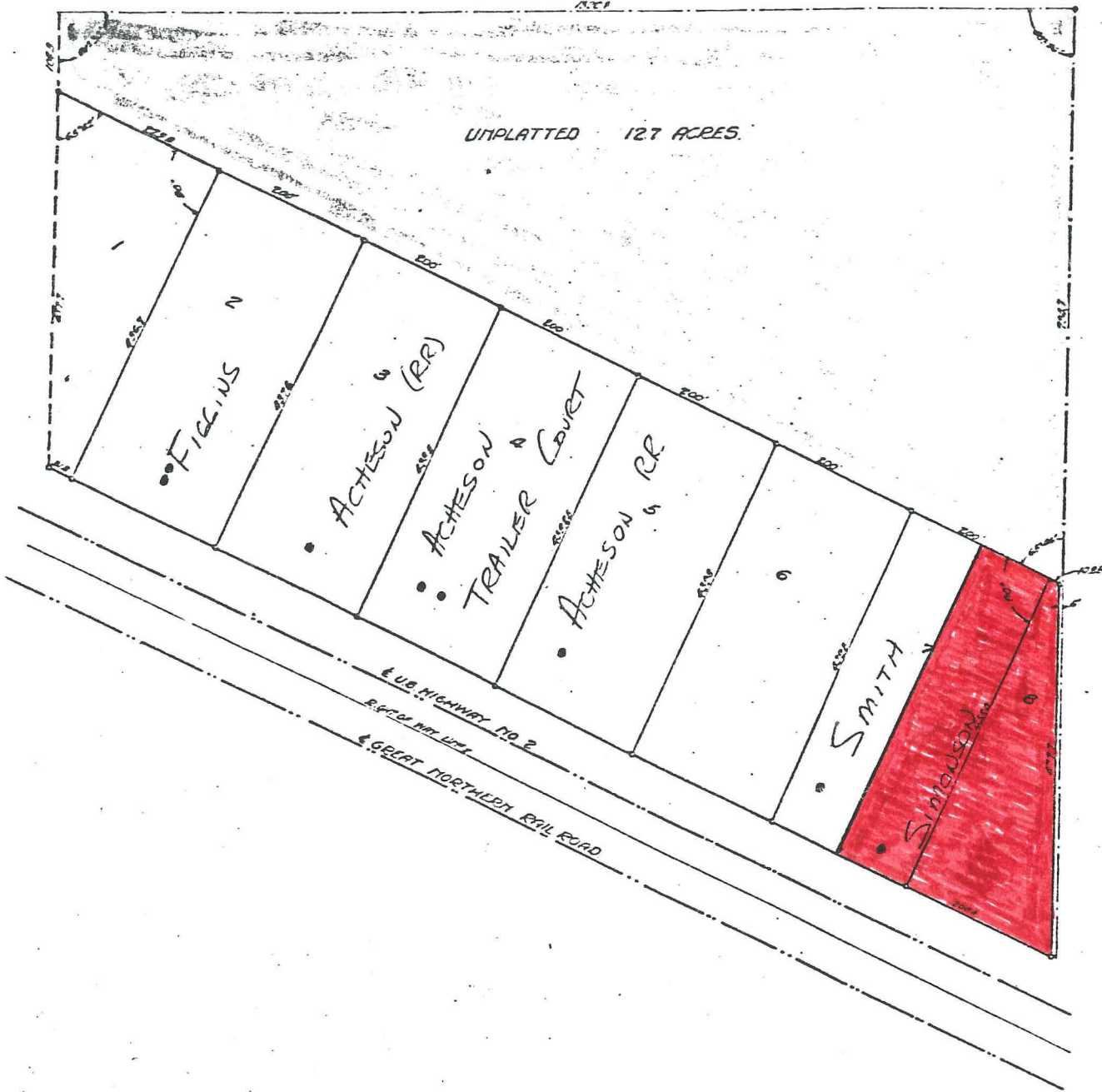
Scale: 1 inch 100 ft.

Platted Area 14 Acres

George D. Mooers, Engineer

August, 1942

UNPLATTED 127 ACRES.



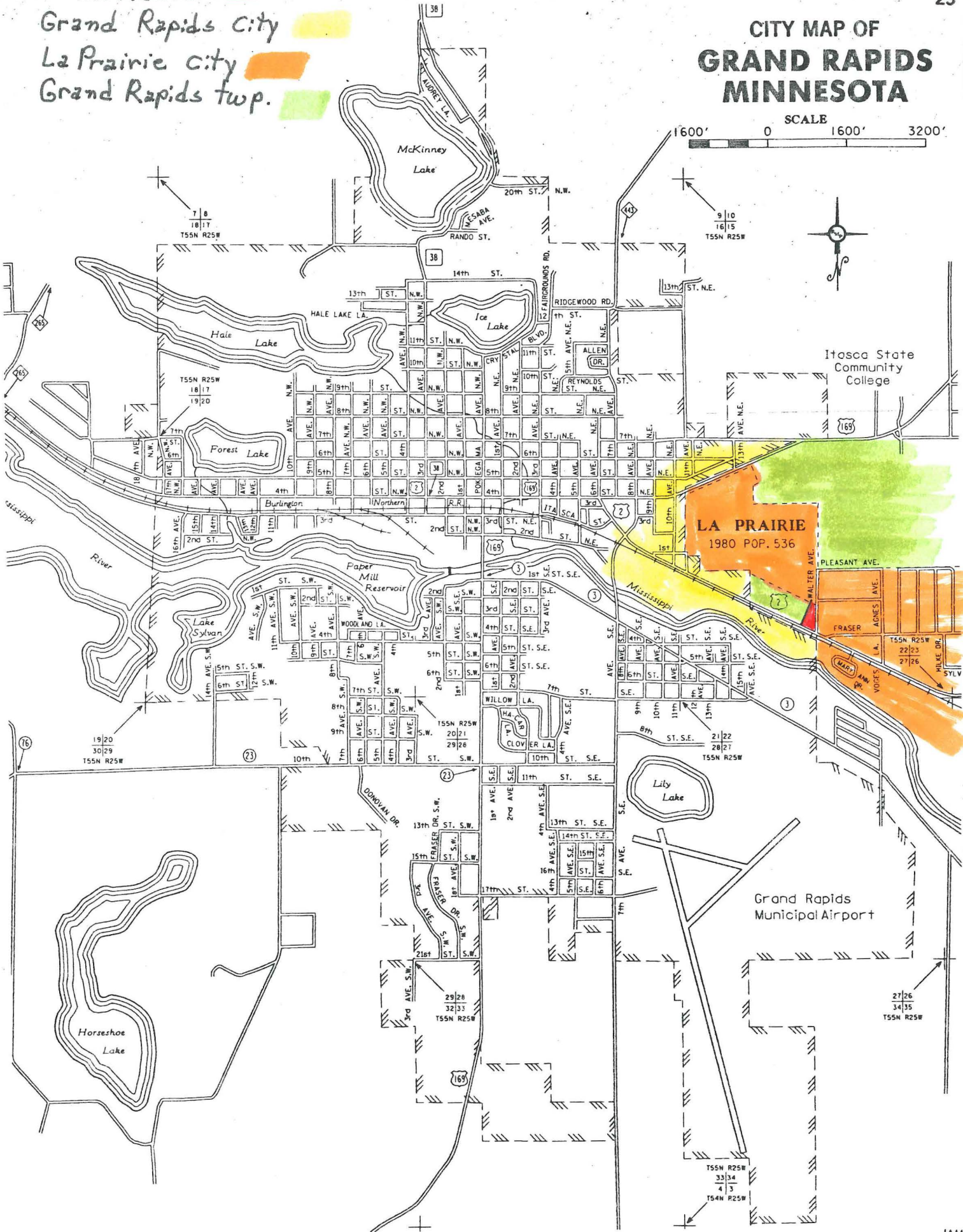
I hereby certify that the above plat was
 made in accordance with the laws of the State of
 Minnesota, and that I am a duly licensed
 Surveyor in and for the State of Minnesota.
 By *George D. Mooers* Eng.

This Plat and Transfer Entered in
 the Office of the County Auditor on
 the 12th day of September, A. D. 1942.
 J. J. WYALING,
 Auditor, Itasca County, Minn.

Simonson
Grand Rapids City
La Prairie City
Grand Rapids twp.

CITY MAP OF GRAND RAPIDS MINNESOTA

SCALE 1600' 0 1600' 3200'



LA PRAIRIE
1980 POP. 536

Grand Rapids
Municipal Airport

Itasca State
Community
College

19/20
30/29
T55N R25W

7/8
18/17
T55N R25W

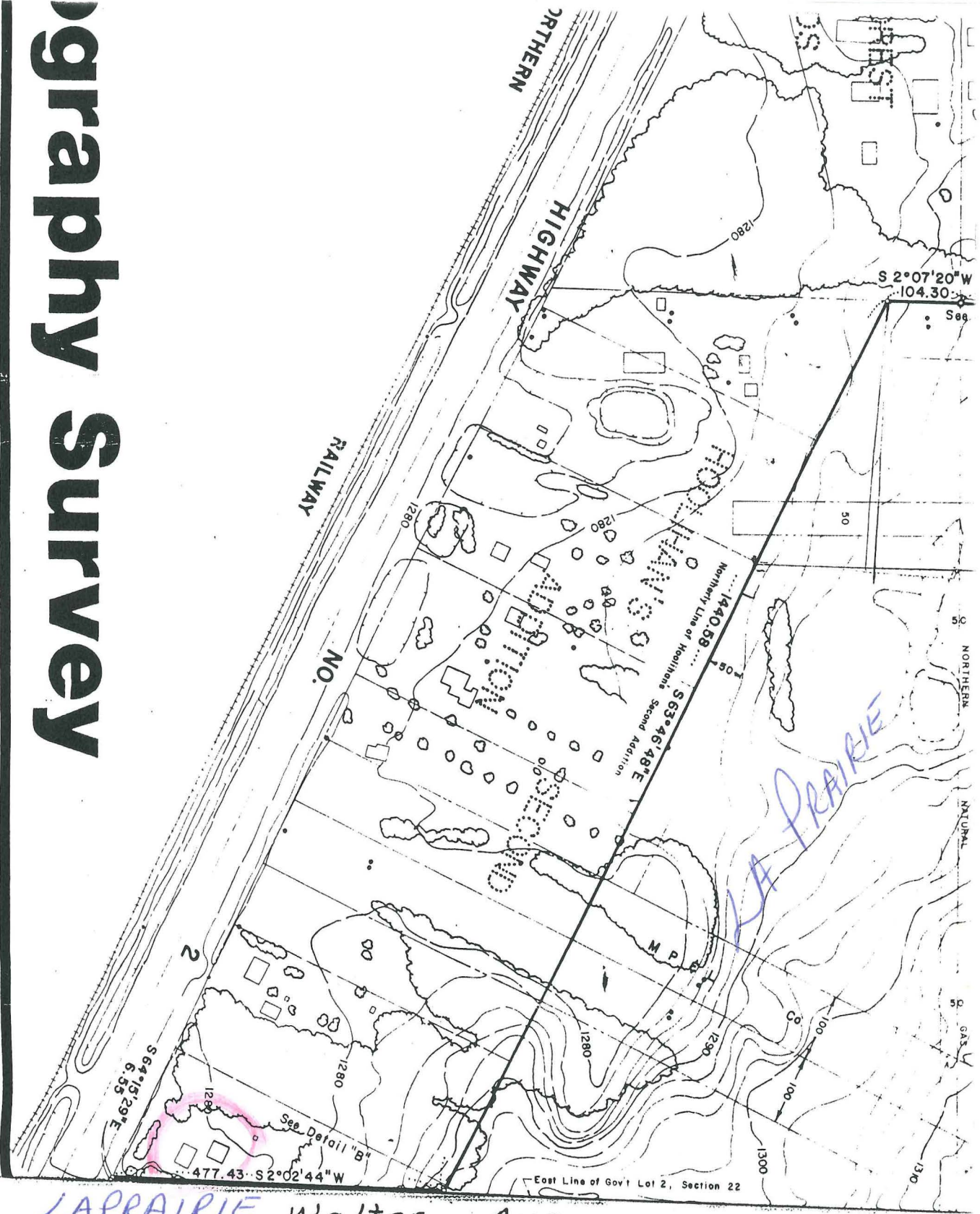
9/10
16/15
T55N R25W

T55N R25W
33/34
4/3
T54N R25W

27/26
34/35
T55N R25W

29/28
32/33
T55N R25W

Topography Survey



LAPRAIRIE Walter Ave
CITY LIMIT

REC'D. BY MMB AUG 23 1991

REC'D. BY SEP 25 1989
M/M/B

Section 22 Town 55 Range 25 REC'D. BY SEP 12 1991
M/M/B

SECTION 15

#169

HOOGLIANS
1ST ADDITION

JACOBI

CALVARY
CEMETERY

NEUMAN

CLAYTON
BUILDERS

SIEGERT

D. N. R.
OFFICE

HOOGLIANS
2ND ADDITION

MISSISSIPPI

RIVER ROAD

RIVER

SECTION 27

SECTION 21

SECTION 23

Lined writing area with horizontal lines.