

ORDINANCE NO. 247 , SECOND SERIES

AN ORDINANCE EXTENDING THE CORPORATE LIMITS OF  
THE CITY OF AUSTIN TO INCLUDE CERTAIN UNINCORPORATED  
LAND ABUTTING THE CITY OF AUSTIN LIMITS.

WHEREAS, a certain petition dated June 3, 1991, requesting annexation of the territory described herein was duly presented to the Common Council on the 3rd day of June, 1991, and

WHEREAS, the quantity of land embraced within the area described in the petition is approximately 29.0 acres of platted land, no part of which is included within the limits of any incorporated city, village, or borough, and

WHEREAS, the petition was signed by all the owners, and

WHEREAS, Austin Town Board has no objection to the annexation upon the land to be annexed and has waived the 90 day period before the annexation ordinance may be adopted, and

WHEREAS, the land described hereinafter abuts the city limits on the southwestern boundary thereof.

NOW, THEREFORE, THE COMMON COUNCIL OF THE CITY OF AUSTIN DO ORDAIN:

SECTION I: The City Council hereby determines that the annexation will be in the best interest to the City and the territory affected. That the territory described herein abuts the city limits and is urban or suburban in character and that none of said territory is now included within the limits of any city, village, or borough.

SECTION II: The corporate limits of the City of Austin are hereby extended to include the platted land described as follows, the same is hereby annexed to, and included within the city as affectionally as if it had originally been a part thereof:

See attached description

SECTION III: The City Recorder is hereby directed to file certified copies of said ordinance with the Minnesota Municipal Commission, the Austin Township Clerk, County Auditor, County Recorder, Austin Utilities, and the Secretary of State.

SECTION IV: The ordinance takes affect upon its passage, publication, filing of certified copies as directed within Section III.

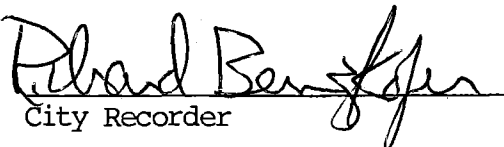
Passed by a vote of Yeas and Nays this 1st day of July, 1991.

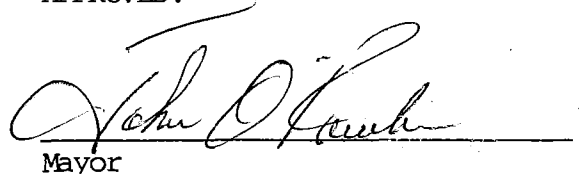
YEAS 7

NAYS 0

ATTEST:

APPROVED:

  
City Recorder

  
Mayor

REC'D. BY  
MMB JUL 18 1991

June 5, 1991

DESCRIPTION FOR ANNEXATION PURPOSES ONLY  
IN N 1/2 SE 1/4 SECTION 9-T102N-R18W

HENRY LIGHTLEY

All that part of the N 1/2 SE 1/4 Section 9-T102N-R18W, described as follows:

Commencing at the northeast corner of said N 1/2 SE 1/4 Section 9-T102N-R18W, thence West a distance of 170.00 feet, on the north line of said SE 1/4, to the point of beginning;

thence West a distance of 1480 feet more or less, on the north line of said SE 1/4, to the northeast corner of Block 9, in the Plat of Austin Homesteads, as the same is platted and recorded in the Office of the County Recorder of Mower County, Minnesota;

thence South a distance of 1053.3 feet, on the east line of said Block 9, Austin Homesteads, to the southeast corner thereof;

thence East a distance of 143.3 feet more or less, to the northwest corner of Block 1, Southgate Second Addition as the same is platted and recorded in the Office of the County Recorder of Mower County, Minnesota;

thence East a distance of 681.7 feet, on the north line of said Southgate Second Addition to a point 825 feet west of the northeast corner thereof.

thence North a distance of 528 feet, on a line parallel with the east line of said SE 1/4 Section 9-T102N-R18W;

thence East a distance of 825 feet, to a point on the east line of said SE 1/4;

thence North a distance of North 271.5 feet, on the east line of said SE 1/4, to a point 257.0 feet South of the northeast corner thereof;

thence West a distance of 170.0 feet, on a line parallel with the north line of said SE 1/4;

thence North a distance of 257.00 feet, to the point of beginning;

Together with:

Commencing at the southwest corner of Outlot 8, located in the NE 1/4 Section 9-T102N-R18W;

thence North a distance of 178 feet, on the West line of said Outlot 8;

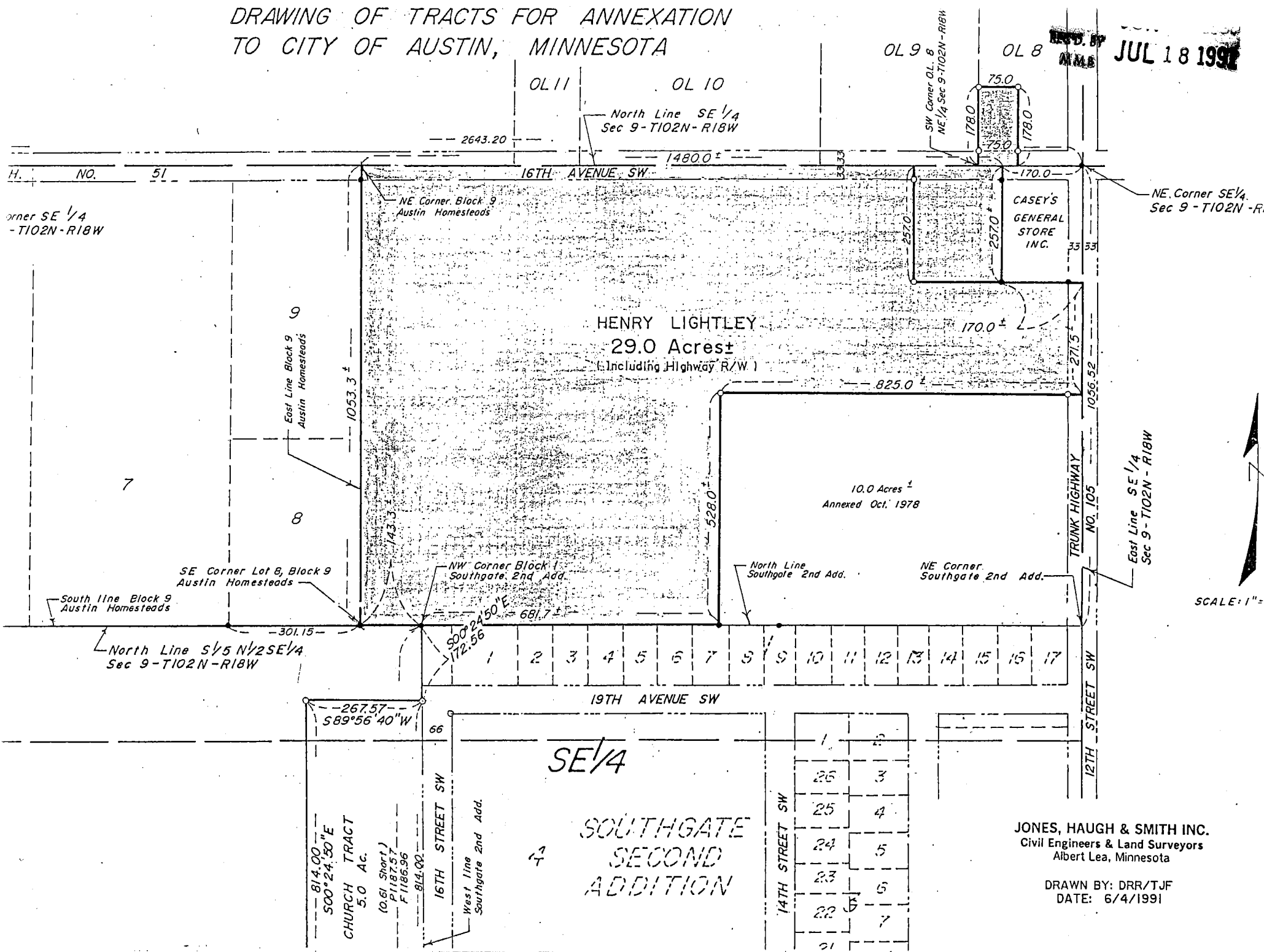
thence East a distance of 75 feet;

thence South a distance of 178 feet, to the South line of said Outlot 8;

thence West a distance of 75 feet, on said South line to the point of beginning.

# DRAWING OF TRACTS FOR ANNEXATION TO CITY OF AUSTIN, MINNESOTA

JUL 18 1991



SCALE: 1" = 100'

JONES, HAUGH & SMITH INC.  
Civil Engineers & Land Surveyors  
Albert Lea, Minnesota

DRAWN BY: DRR/TJF  
DATE: 6/4/1991