

AN ORDINANCE ANNEXING PROPERTY
TO THE CORPORATE LIMITS OF
THE CITY OF MANKATO

WHEREAS, certain property described below is not presently included in the corporate limits of any incorporated city, village, or borough; and

WHEREAS, pursuant to Minnesota Statutes 414.003, Subdivision 5, the owners of such property described below have petitioned the City of Mankato for annexation of such property; and

WHEREAS, no objection has been filed pertaining to such petition; and

WHEREAS, the property is about to become urban in character; and

WHEREAS, there is no population on the property.

NOW, THEREFORE, the Council of the City of Mankato hereby ordains the corporate limits of the City of Mankato are hereby extended to and include the land described as follows and the same is hereby annexed to and included within the City of Mankato as effectively as if it had originally been a part thereof:

That part of the the North 620 feet of the Southeast Quarter (SE 1/4) of the Northeast Quarter (NE 1/4) of Section 16, Township 108 North, Range 26 West, Blue Earth County, Minnesota, lying westerly of Highway 22 Subdivision according to the plat thereof recorded in F of plats 62 in the County Recorder's office, and excepting therefrom that part of Hosanna's addition lying and being within said North 620 feet.

Said tract contains 13.93 acres.

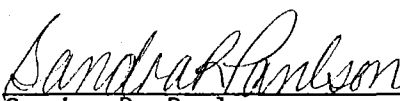
The City Clerk is hereby directed to file copies of this ordinance with the Minnesota Municipal Board, the Secretary of State, the Blue Earth County Auditor, and the Mankato Township Board.

This ordinance shall be effective 30 days after its passage, due publication thereof, and approval by the Minnesota Municipal Board.

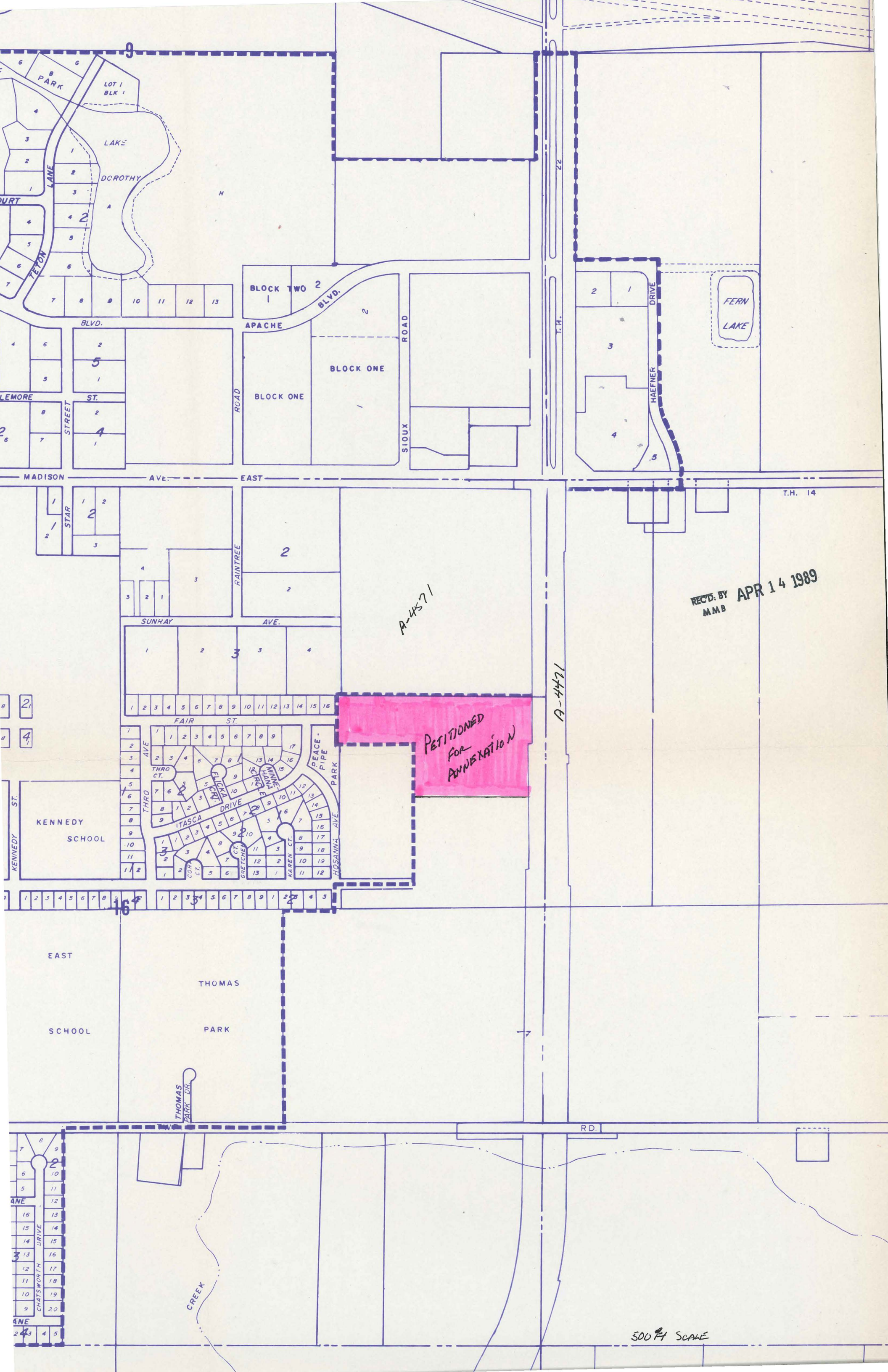
Adopted this 14th day of August, 1989.



Vernon K. Carstensen
Mayor

ATTEST: 

Sandra R. Paulson
City Clerk



A-4471

REC'D BY MMB APR 14 1989

PETITIONED FOR ANNEXATION

A-4471

500 FT SCALE