

AN ORDINANCE ANNEXING PROPERTY TO  
THE CORPORATE LIMITS OF THE CITY OF MANKATO

WHEREAS, certain property described below is not presently included in the corporate limits of any incorporated city, village, or borough; and

WHEREAS, pursuant to M.S. 414.033, Subdivision 5, the owners of the property described below have petitioned the City of Mankato for annexation of such property; and

WHEREAS, the property is located adjacent to existing City boundaries and can be served with public utilities; and

WHEREAS, the Council of the City of Mankato finds that the property is about to become urban in character and Mankato Township has adopted a resolution stating no objection to the annexation.

NOW, THEREFORE, the Council of the City of Mankato hereby ordains that the corporate limits of the City are hereby extended to include the land described as follows and the same is hereby annexed to and included within the City of Mankato as effectively as if it had originally been part thereof:

That part of the Southwest Quarter of the Southwest Quarter of Section 9, Township 108 North, Range 26 West, Blue Earth County, Minnesota, described as:

Commencing at the Southwest Corner of Section 9; thence South 89 degrees 44 minutes 24 seconds East (assumed bearing) along the south line of the Southwest Quarter of Section 9, the same being the south line of Rooney's Subdivision, according to the plat thereof on file and of record with the Blue Earth County Recorder, a distance of 460.00 feet to the southeast corner of said Rooney's Subdivision; said point being the point of beginning; thence continuing South 89 degrees 44 minutes 24 seconds East, along the south line of the Southwest Quarter of Section 9 a distance of 858.12 feet to the southeast corner of the Southwest Quarter of the Southwest Quarter of Section 9, the same being the southwest corner of North Star Subdivision, according to the plat thereof on file and of record with the Blue Earth County Recorder; thence North 00 degrees 19 minutes 33 seconds East, along the west line of said North Star Subdivision, 50.00 feet to the southwest corner of "A Replat of Lots 1, 2, 3 and 4, Block Two and the Green Belt lying adjacent to Lots 1, 2, 3, and 4 of Block Two, North Star Subdivision, City of Mankato, Blue Earth County, Minnesota"; thence continuing North 00 degrees 19 minutes 33 seconds East, along the west line of said "Replat", 460.00 feet to a point on the northerly right-of-way line of Tullemore Street according to said "Replat"; thence North 89 degrees 44 minutes 24 seconds West, 130.03 feet to the point of curvature of a circular curve to the left; thence southwesterly along a 737.55 foot radius curve, Central Angle = 16 degrees 05 minutes 20 seconds, an arc distance of 207.12 feet to the point of tangency of said curve; thence South 74 degrees 10 minutes 16 seconds West, along the tangent of said curve, 265.50 feet to the

point of curvature of a circular curve to the right; thence southwesterly along a 677.55 foot radius curve, central angle = 16 degrees 05 minutes 20 seconds, an arc distance of 190.26 feet to the point of tangency of said curve; thence North 89 degrees 44 minutes 24 seconds West, along the tangent of said curve, 79.88 feet to the southeast corner of Lot 1, Block Two, Rooney's Subdivision; thence South 00 degrees 29 minutes 19 seconds West, along the easterly line of Rooney's Subdivision, 381.00 feet to the point of beginning.


Said Tract contains 8.85 acres.


The City Clerk is hereby directed to file copies of this Ordinance with the Minnesota Municipal Board, the Secretary of State, the Blue Earth County Auditor and the Mankato Town Board.

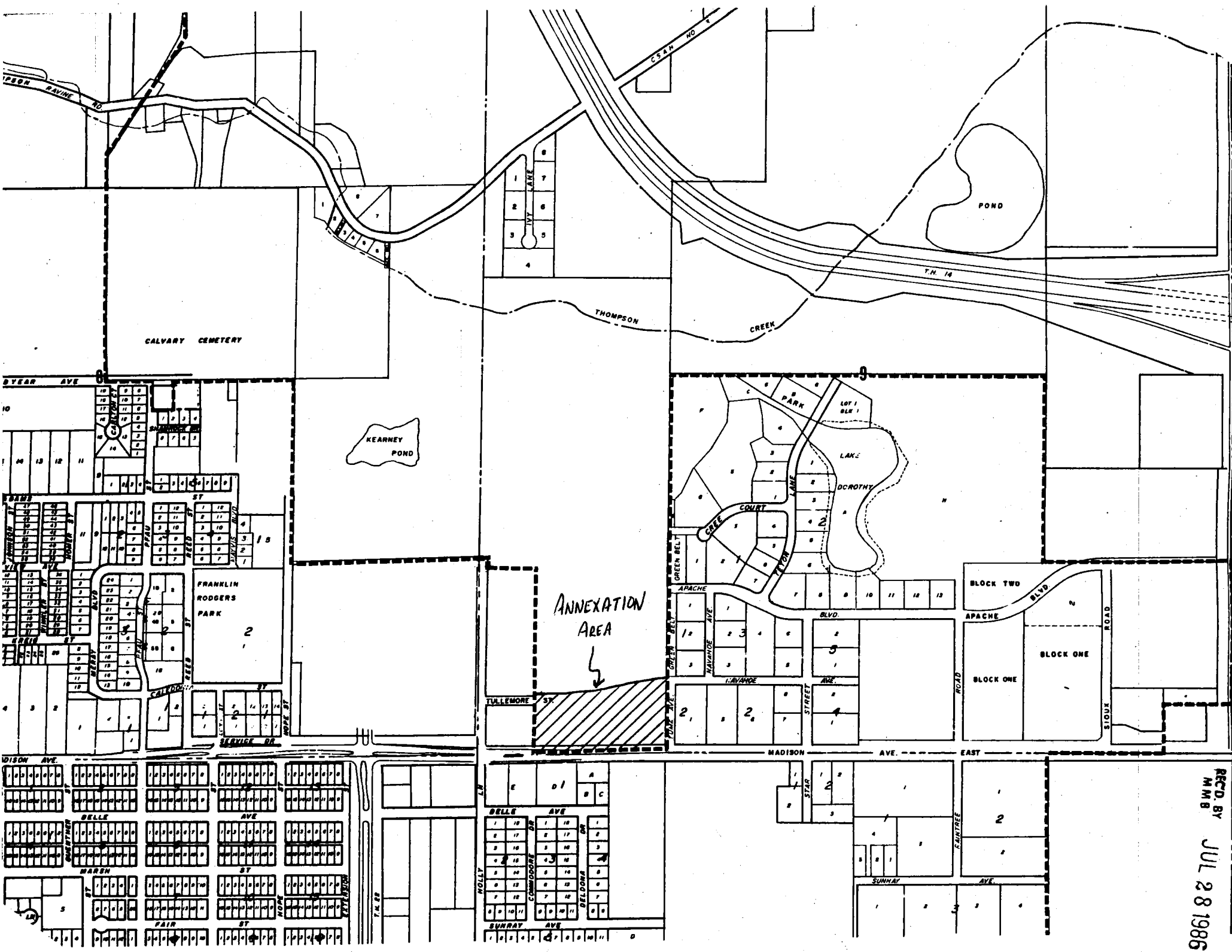
This Ordinance shall take effect thirty (30) days after its passage, due publication thereof, and approval by the Minnesota Municipal Board.

Adopted this 22nd day of September, 1986.

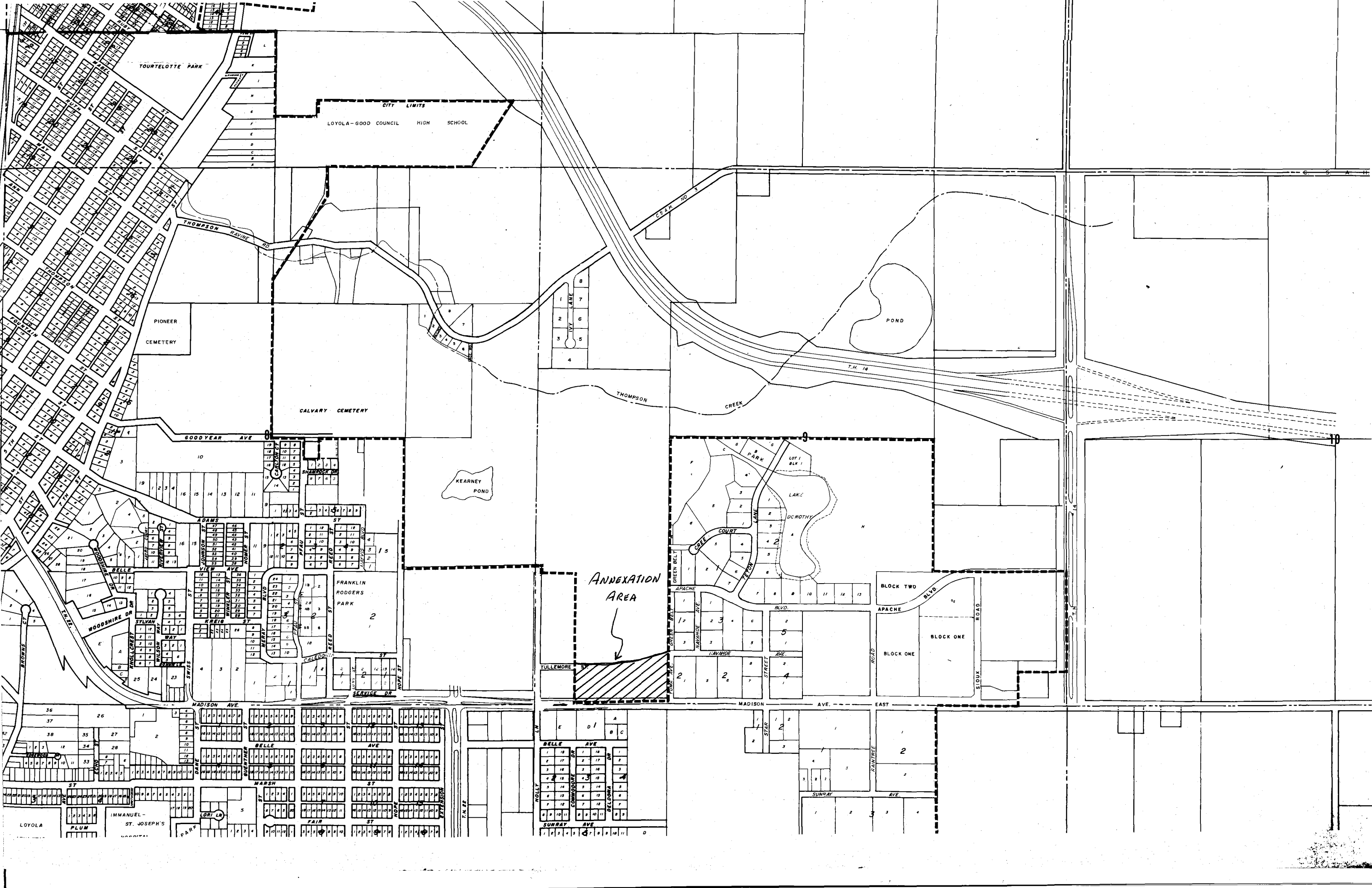
ATTEST:

  
Carla S. Raberge  
City Clerk

  
\_\_\_\_\_  
City of Mankato  
Herbert Mocol, Mayor



REC'D BY  
MMB  
JUL 28 1986



TOURTELOTTE PARK

CITY LIMITS  
LOYOLA-GOOD COUNCIL HIGH SCHOOL

PIONEER CEMETERY

CALVARY CEMETERY

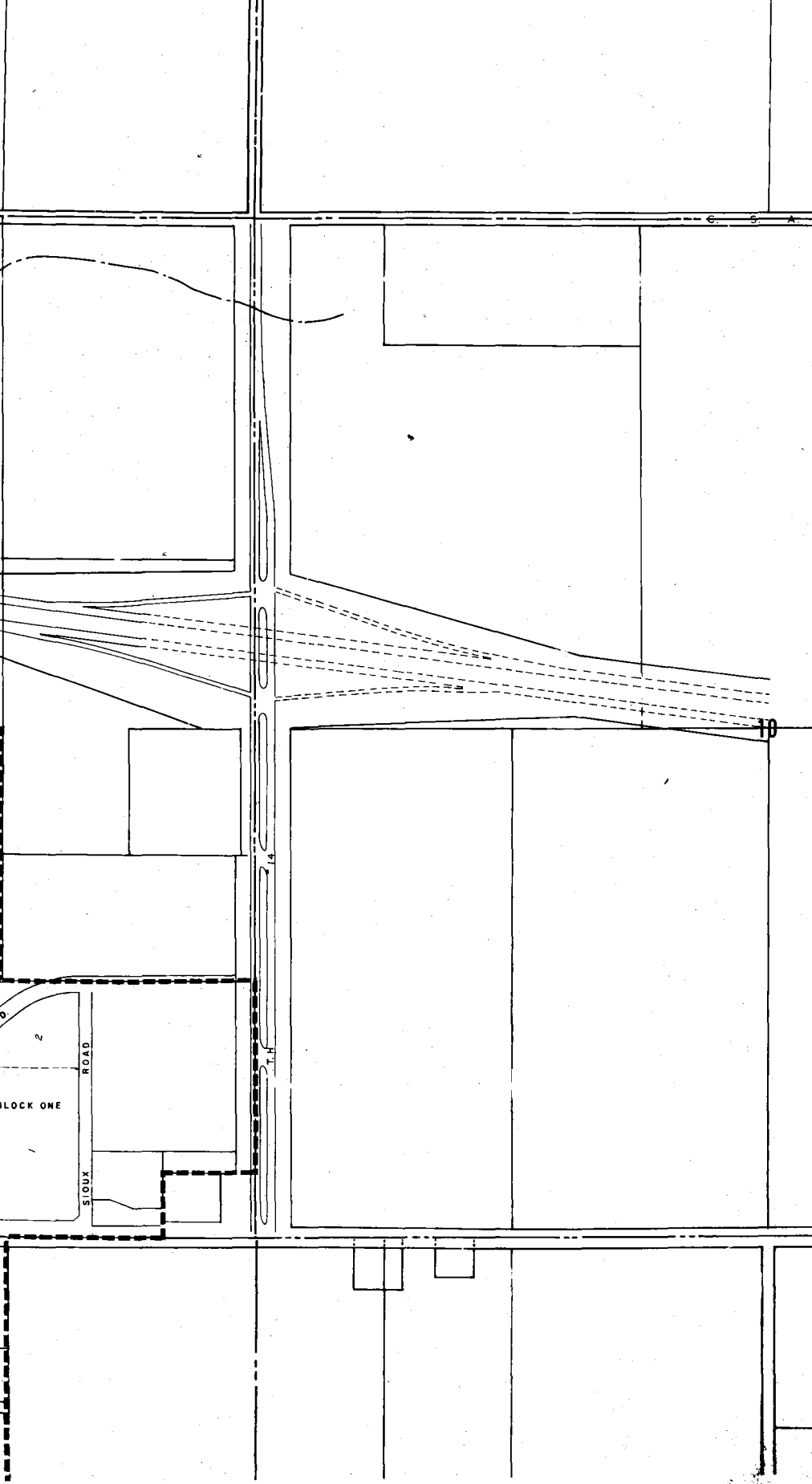
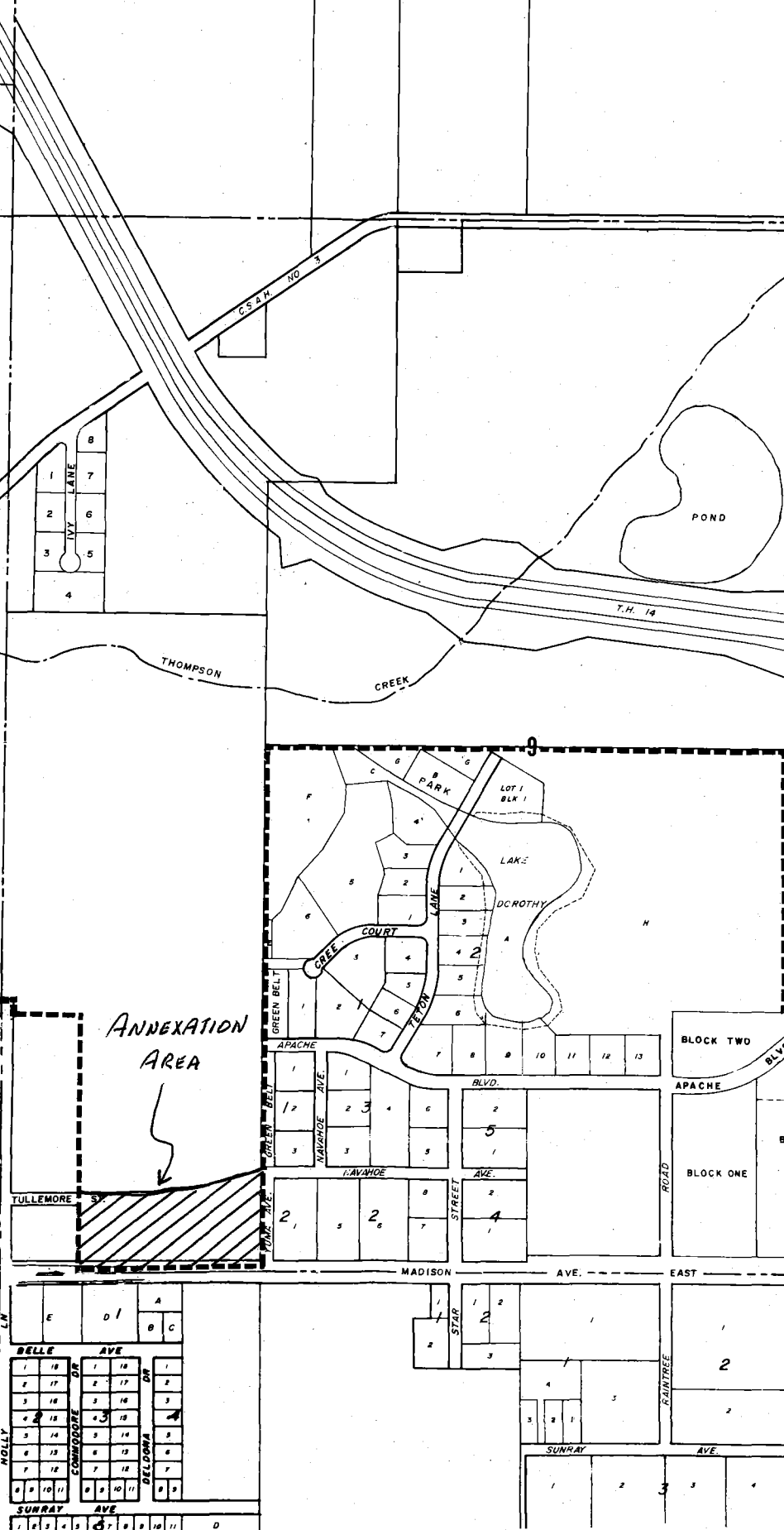
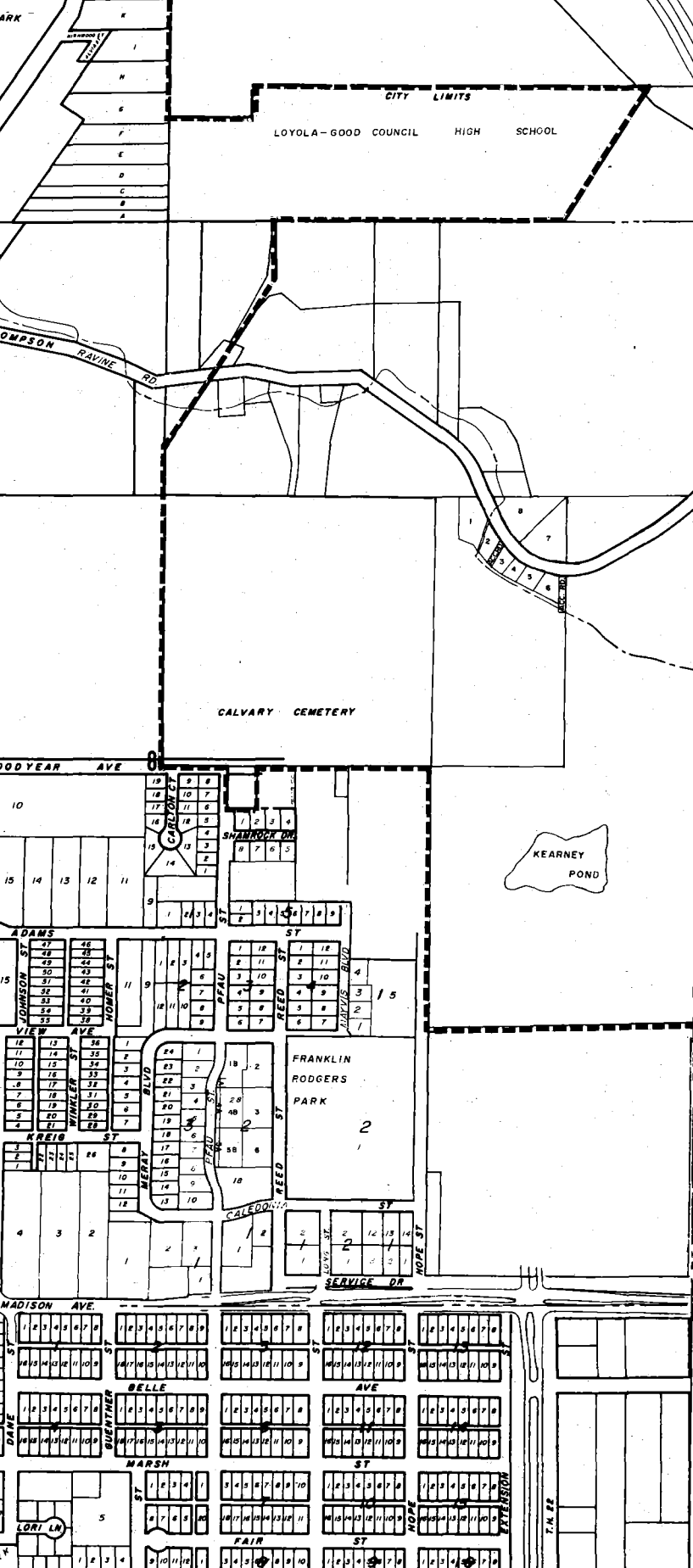
POND

KEARNEY POND

ANNEXATION AREA

FRANKLIN RODGERS PARK

BLOCK TWO  
BLOCK ONE  
BLOCK ONE



①  
BLOCK TWO

TULLAMORE STREET

①  
BLOCK ONE

B L O C K O N E

MADISON AVENUE

☪ MADISON AVENUE

YUMA AVENUE

ROONEY'S SUBDIVISION

SE CORNER  
LOT 1, BLOCK TWO  
ROONEY'S SUBD.

SE CORNER  
ROONEY'S SUBD.

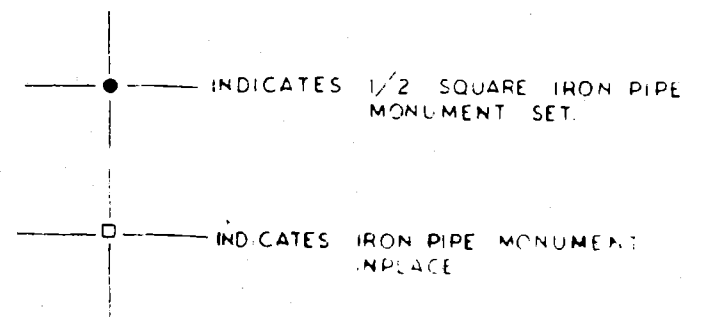
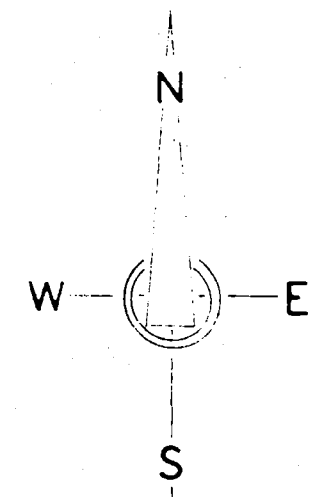
A REPEAT OF LOTS 1, 2, 3 & 4  
OF BLOCK TWO AND THE  
GREEN BELT LYING ADJACENT  
TO LOTS 1, 2, 3 & 4 OF BLOCK  
TWO, NORTH STAR SUBD.,  
CITY OF MANKATO, MN,  
SOUTH COUNTY, MINNESOTA

SW CORNER  
REPEAT

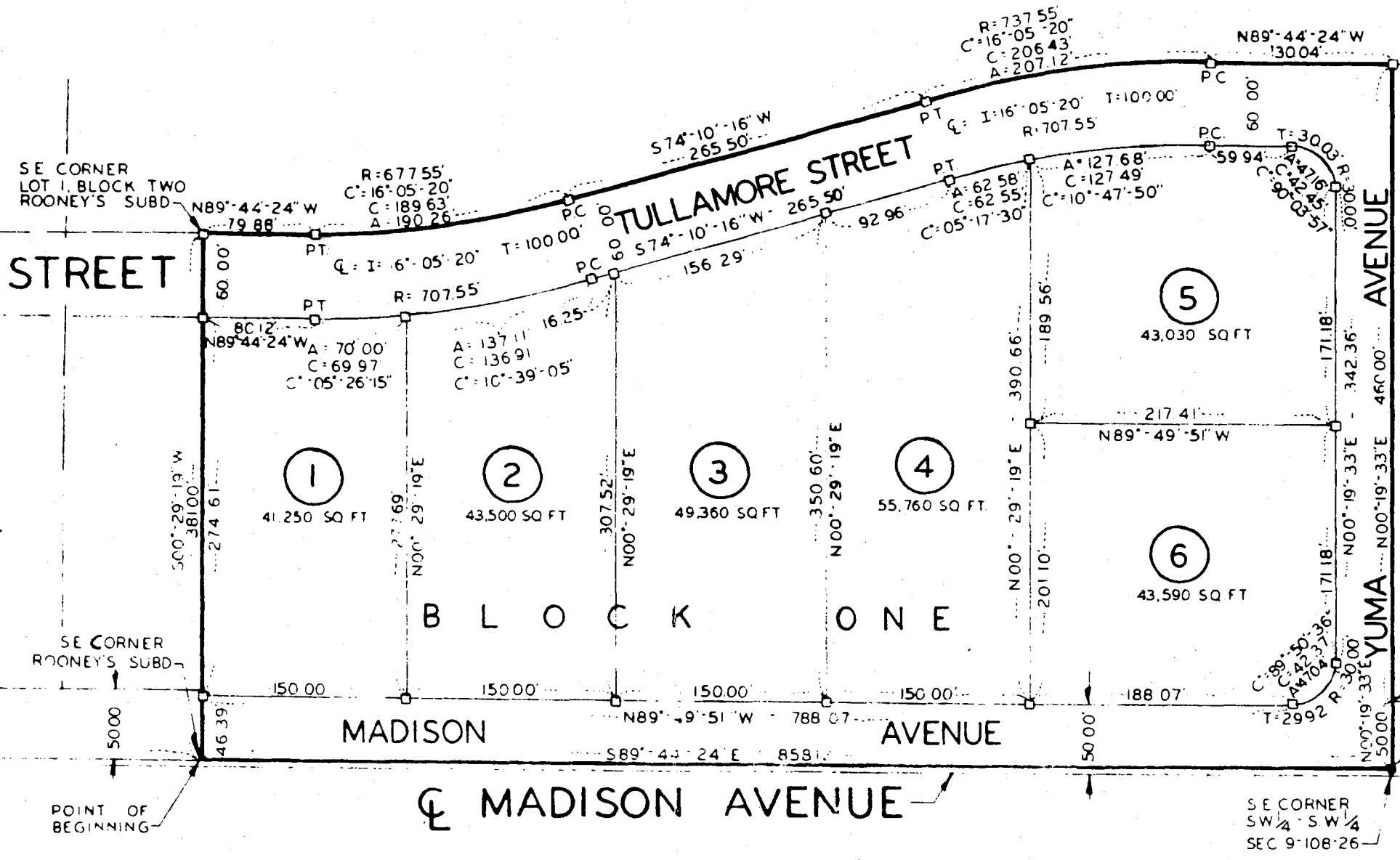
SW CORNER  
NORTH STAR  
SUBDIVISION

SE CORNER  
SW 1/4 SW 1/4  
SEC 9-108-26

POINT OF  
BEGINNING



CORNER  
9-108-26  
SOUTH LINE SW 1/4 SEC 9  
460.00  
S89°-44'-24"E  
ASSUMED BEARING



SE CORNER  
LOT 1, BLOCK TWO  
ROONEY'S SUBD.

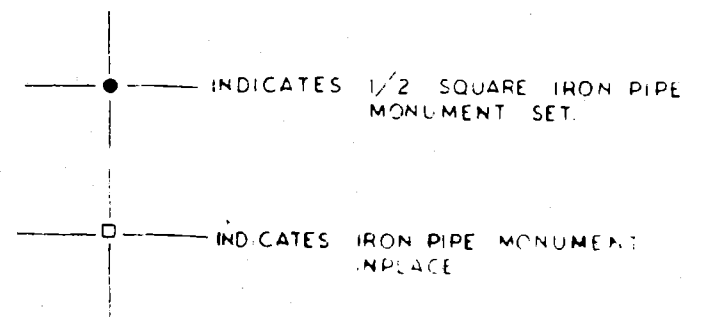
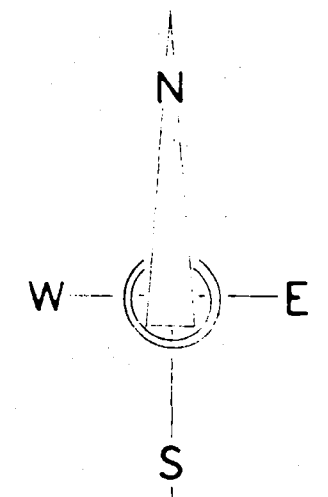
SE CORNER  
ROONEY'S SUBD.

SW CORNER  
REPEAT

SW CORNER  
NORTH STAR  
SUBDIVISION

SE CORNER  
SW 1/4 SW 1/4  
SEC 9-108-26

POINT OF  
BEGINNING



CORNER  
9-108-26  
SOUTH LINE SW 1/4 SEC 9  
460.00  
S89°-44'-24"E  
ASSUMED BEARING