

ORDINANCE NO. 638

AN ORDINANCE EXTENDING THE CORPORATE LIMITS OF THE CITY OF STILLWATER INTO CERTAIN UNINCORPORATED TERRITORY THAT IS MORE THAN SIXTY PERCENT SURROUNDED BY LAND WITHIN THE CITY LIMITS

WHEREAS, certain territory described below is not presently included within the corporate limits of any incorporated city or borough; and

WHEREAS, this territory is more than sixty percent surrounded by lands already included within the corporate limits of the city and the land is deemed to be urban or suburban in character;

NOW THEREFORE, the City Council of the City of Stillwater ordains:

Section 1. Territory Annexed. The corporate limits of the City of Stillwater, Minnesota, are hereby extended to include the unplatted territory described as follows (which territory now is and has heretofore been more than sixty percent surrounded by territory already included within the city limits):

All that part of Section Twenty-nine (29), Township Thirty (30), Range Twenty (20) West legally described as follows:

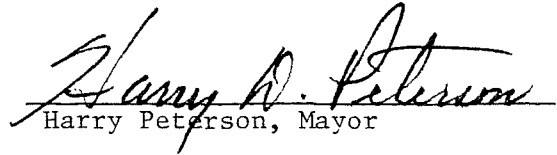
Commencing at the Northwest corner of the Northwest Quarter of the Southwest Quarter of Sections Twenty-nine (29), and running thence South on the West line thereof for a distance of Five (5) rods, thence East a distance of One (1) rod, thence North on a line parallel with the West line of said tract a distance of Five (5) rods to the North line of the Northwest Quarter of the Southwest Quarter; since West on said Quarter line a distance of One (1) rod to the place of beginning.

Section 2. Filing. The City Clerk is directed to file certified copies of this ordinance with the Secretary of State, the County Auditor of Washington County, Minnesota, the Town Clerk of the Township of Stillwater, Minnesota, and the Minnesota Municipal Commission.

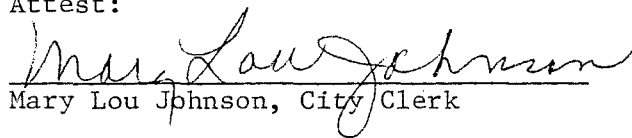
Section 3. Effective Date of Annexation. This ordinance takes effect upon passage and publication and the filing of certified copies as directed

in Section 2 and approval of a Minnesota Municipal Commission.

Adopted by the City Council of Stillwater, Minnesota, this 17th  
day of September, 1985.

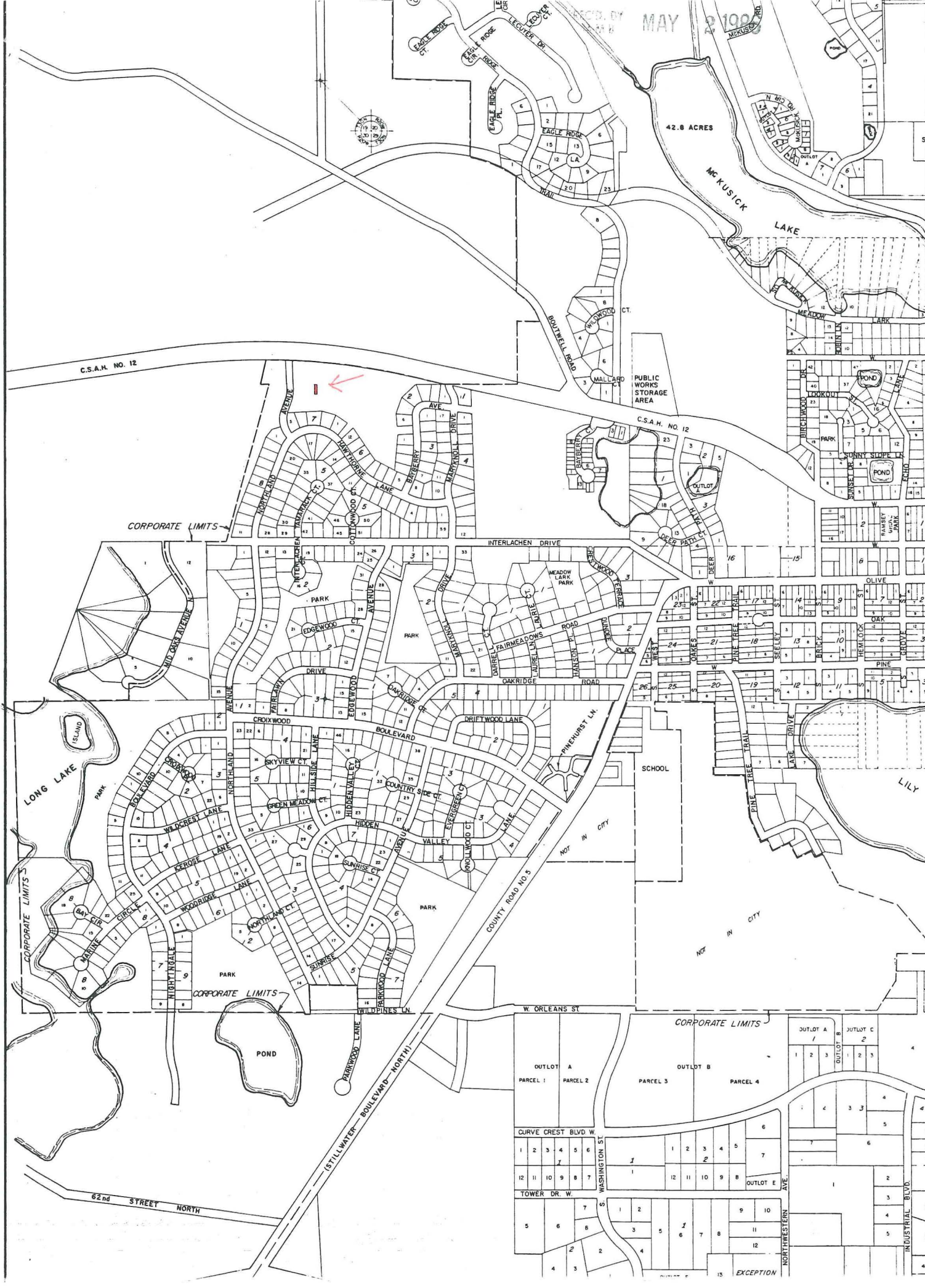
  
Harry Peterson, Mayor

Attest:

  
Mary Lou Johnson, City Clerk

Published in Stillwater Gazette  
on September 27, 1985.

MAY 2 1900



C.S.A.H. NO. 12

C.S.A.H. NO. 12

CORPORATE LIMITS

LONG LAKE

SCHOOL

CORPORATE LIMITS

CORPORATE LIMITS

CORPORATE LIMITS

62nd STREET NORTH

STILLWATER BOULEVARD-NORTH

