

JUN 26 1985

ORDINANCE NO. 1985-1

AN ORDINANCE EXTENDING THE CORPORATE LIMITS OF THE CITY OF BROWNSDALE TO INCLUDE CERTAIN UNINCORPORATED TERRITORY COMPLETELY SURROUNDED BY LAND WITHIN THE CITY LIMITS AND ABUTTING THEREON.

WHEREAS, certain territory described below is not presently included within the corporate limits of any incorporated city or borough; and

WHEREAS, this territory is completely surrounded on all sides by lands already included within the corporate limits of the city and is deemed to be urban or suburban in character;

THE COMMON COUNCIL OF THE CITY OF BROWNSDALE DO ORDAIN:

Section 1. Territory annexed. The corporate limits of the City of Brownsdale, Minnesota, are hereby extended to include the platted territory described as follows, which territory now is and has heretofore been completely surrounded by territory already included within the city limits:

That part of Outlot 49, in Section 9, Township 103 North, Range 17 West, described as follows: Beginning at a point 56 rods West of the Northeast corner of Block 3, Village of Brownsdale; thence West 100 feet; thence South 7 rods 4 2/3 feet; thence East 100 feet; thence North to the place of beginning, all lying and being in Mower County, Minnesota.

Section 2. Filing. The City Clerk is directed to file certified copies of this ordinance with the Minnesota Municipal Board, Red Rock Township Clerk, County Auditor, County Recorder and the Secretary of State.

Section 3. Effective date of annexation. This ordinance takes effect upon passage and publication and the filing of certified copies as directed in Section 2, and approval by the Minnesota Municipal Board.

Passed by a vote of Yeas and Nays this 7 day of January, 1985.

YEAS 5

NAYS 0

APPROVED:

BY Maurice Foster
Mayor

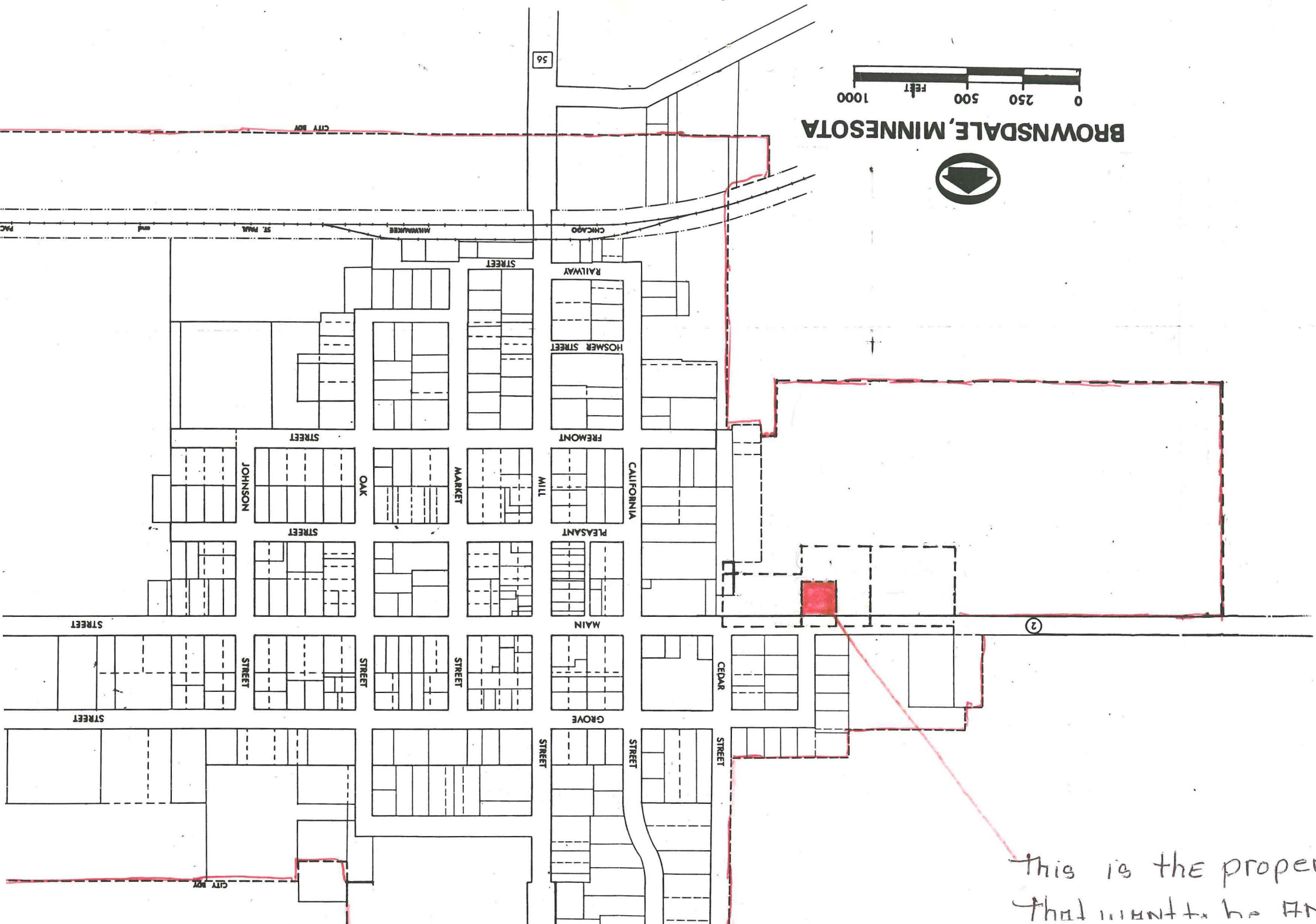
ATTEST:

Ida Foster

City Clerk

Published in Austin Daily Herald on the 20 day of June, 1985.

BROWNSDALE, MINNESOTA



This is the property
that wants to be Annex into