

PETITION FOR ANNEXATION OF
PLATTED LAND OR UNPLATTED LAND OF 200 ACRES OR LESS
MINNESOTA STATUTES, SECTION 414.033 SUBD. 5

To: Common Council
City Hall
Rochester, MN 55901

The undersigned being (all) (a majority) of the owners in number of the land hereinafter described which abuts the City of Rochester, petition the Common Council to annex said land to the City of Rochester: (If more space is needed, attach additional sheet)

Description: Lot 7 Toogood Terrace
518 16th St. S.W.

Reason for Annexation: improve property

Total Number of Owners: two
"Owners" include each fee holder, contract for deed purchaser, joint tenant, and tenant in common.

Area of Land to be Annexed in Acres:
Platted ✓ Unplatted _____ Total 1 acre

Existing Population of Area to be Annexed: 4

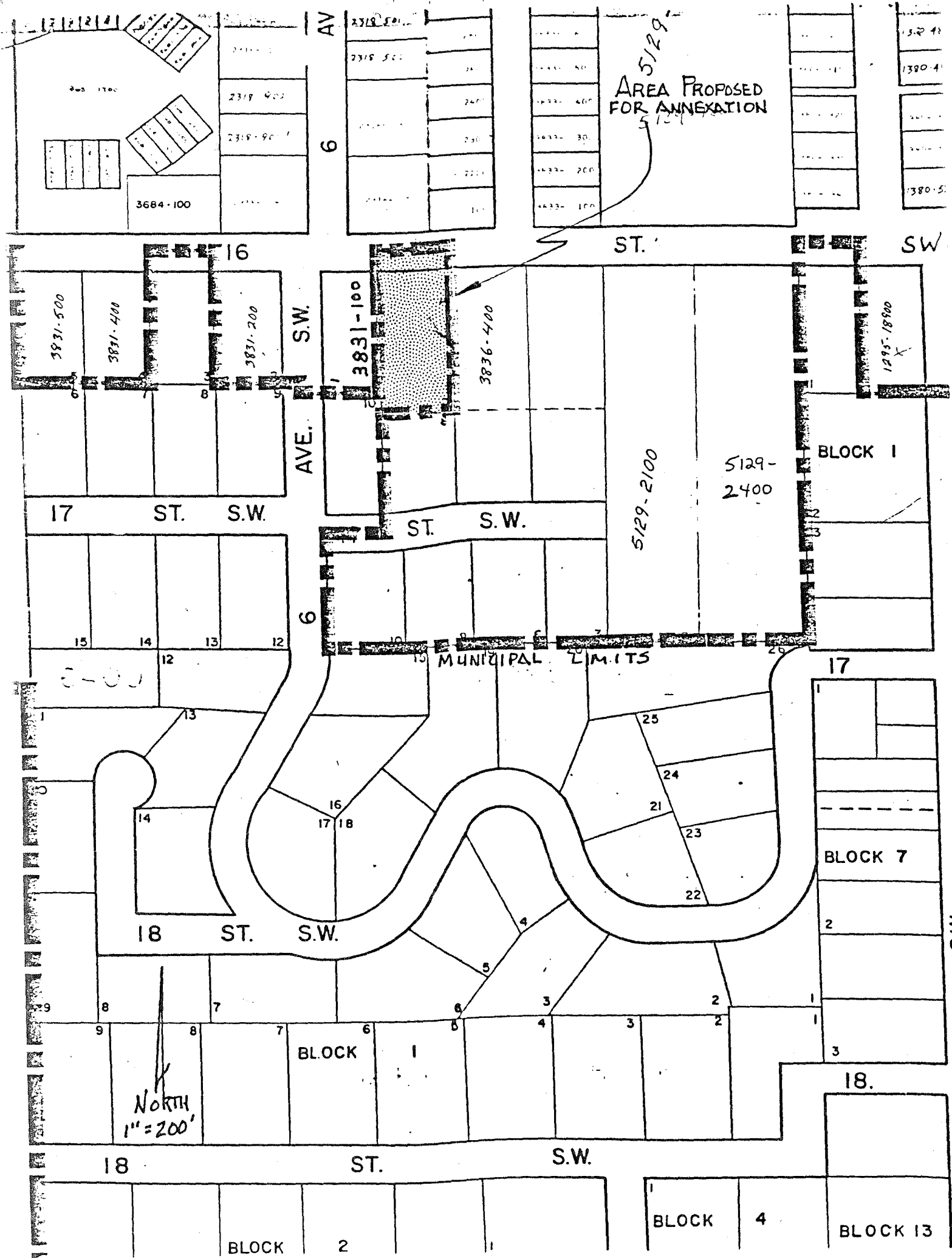
IN WITNESS WHEREOF we have subscribed to this petition of this 24th day of May, 19 85.

Respectfully submitted, (Additional names may be put on attached sheet if necessary.)

Peter J. Dyck
(Owner) (Address)
J. Isabelle Dyck 518 16th St. S.W.
(Owner) (Address)

- DISTRIBUTION:
City Clerk (White Copy)
Consolidated Planning Department (Yellow Copy)
Township Board (Blue Copy)
Olmsted County Board (Green Copy)
Minnesota Municipal Commission (Pink Copy)
Petitioner (Goldenrod Copy)

ANNEXATION: FORM NO. 1
Petition for Annexation



5129
AREA PROPOSED FOR ANNEXATION

MUNICIPAL LIMITS

NORTH
1" = 200'

AVE. SW.

6

6

ST. S.W.

BLOCK 1

ST. S.W.

BLOCK 2

ST.

5129-2100

5129-2400

BLOCK 1

BLOCK 7

18.

BLOCK 4

BLOCK 13

3831-500

3831-400

3831-200

3831-100

3836-400

1295-1890

3684-100

2319-900

2319-900

2319-900

2319-500

2319-500

2319-500

2319-500

2319-500

2319-500

2319-500

2319-500

2319-500

2319-500

2319-500

2319-500

2319-500

2319-500

2319-500

2319-500

2319-500

2319-500

2319-500

2319-500

2319-500

2319-500

2319-500

2319-500

2319-500

2319-500

2319-500

2319-500

2319-500

2319-500

2319-500

2319-500

2319-500

2319-500

2319-500

2319-500

2319-500

2319-500

2319-500

2319-500

2319-500

2319-500

2319-500

2319-500

2319-500

2319-500

2319-500

2319-500

2319-500

2319-500

2319-500

2319-500

2319-500

2319-500

2319-500

2319-500

2319-500

2319-500

2319-500

2319-500

2319-500

2319-500

2319-500

2319-500

2319-500

2319-500

2319-500

2319-500

2319-500

2319-500

2319-500

2319-500

2319-500

2319-500

2319-500

2319-500

2319-500

2319-500

2319-500

2319-500

2319-500

2319-500

2319-500

2319-500

2319-500

2319-500

2319-500

2319-500

2319-500

2319-500

2319-500

2319-500

2319-500

2319-500

2319-500

2319-500

2319-500

2319-500

2319-500

1380-4

1380-4

1380-4

1380-4

1380-4

1380-4

1380-4

1380-4

1380-4

1380-4

1380-4

1380-4

1380-4

1380-4

1380-4

1380-4

1380-4

1380-4

1380-4

1380-4

1380-4

1380-4

1380-4

1380-4

1380-4

1380-4

1380-4

1380-4

1380-4

1380-4

1380-4

1380-4

1380-4