

ORDINANCE NO.

2392

REC'D. BY
M.M.B.

DEC 20 1984

AN ORDINANCE ANNEXING TO THE CITY OF
ROCHESTER, MINNESOTA, CERTAIN
PLATTED LAND IN KNOLLWOOD ACRES,
ROCHESTER TOWNSHIP, OLMSTED COUNTY,
MINNESOTA.

THE COMMON COUNCIL OF THE CITY OF ROCHESTER DO ORDAIN:

Section 1. A petition has been filed with the Common Council of the City of Rochester, signed by the owners of land described herein, requesting the Common Council to annex said land to the City of Rochester. The land described in said petition for annexation is located in Rochester Township, Olmsted County, Minnesota, and is described as follows:

Lots 1 and 3, Block 3, Knollwood Acres

Said petition has also been filed with the Town Board of Rochester Township, with the County Board of the County of Olmsted, and with the Minnesota Municipal Commission, and the Town Board of Rochester Township has notified the City that it has no objections to the annexation of the above-described land.

Section 2. The quantity of land included in said petition is approximately one acre in size.

Section 3. The Common Council of the City of Rochester does hereby determine that the land described in Section 1 abuts upon the present territorial limits of the City of Rochester, is so conditioned as to be properly subjected to municipal government, and the annexation of said land will be in the best interest of the City of Rochester and the land described.

Section 4. Therefore, the land described in Section 1 above is hereby annexed, added to and made a part of the City of Rochester, Minnesota, as effectually as if it had originally been a part thereof.

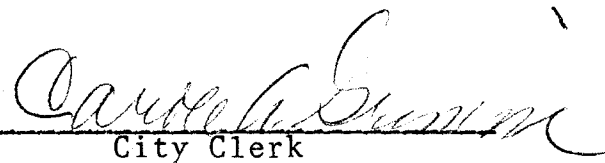
Section 5. Present and future owners of the area annexed by this ordinance are hereby notified that in addition to the usual assessments, it is the intention of the Common Council to assess against benefited property all or a portion of the cost of any storm sewer, water tower, and trunk line sanitary sewer construction, heretofore or hereafter undertaken to serve the area annexed.

Section 6. This ordinance shall take effect and be in force from and after its official publication and from and after the filing of a certified copy hereof with the Minnesota Municipal Board, the Rochester Town Clerk, the County Auditor, and the Secretary of State.

Passed and adopted by the Common Council of the City of Rochester, Minnesota, this 19 day of November 1984.

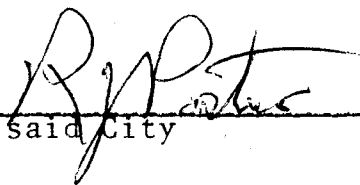


President of said Common Council

Attest: 

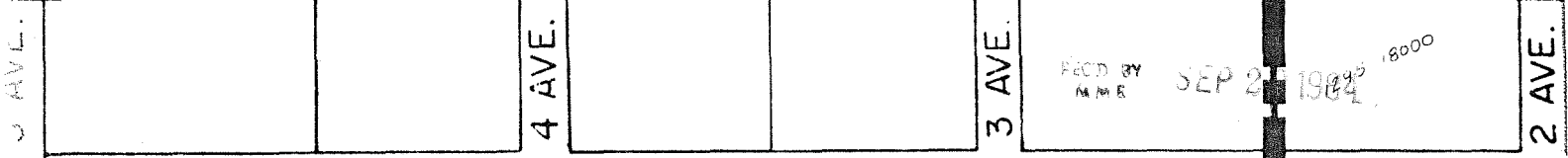
City Clerk

Approved this 20 day of November 1984.

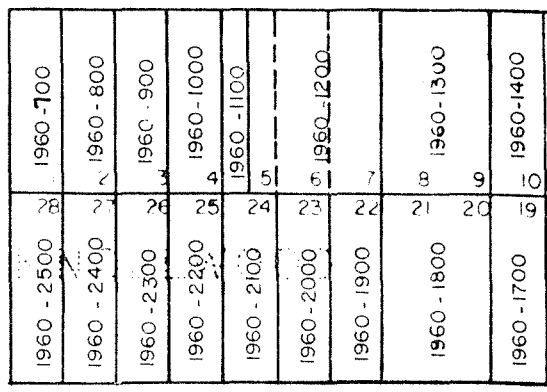


Mayor of said City

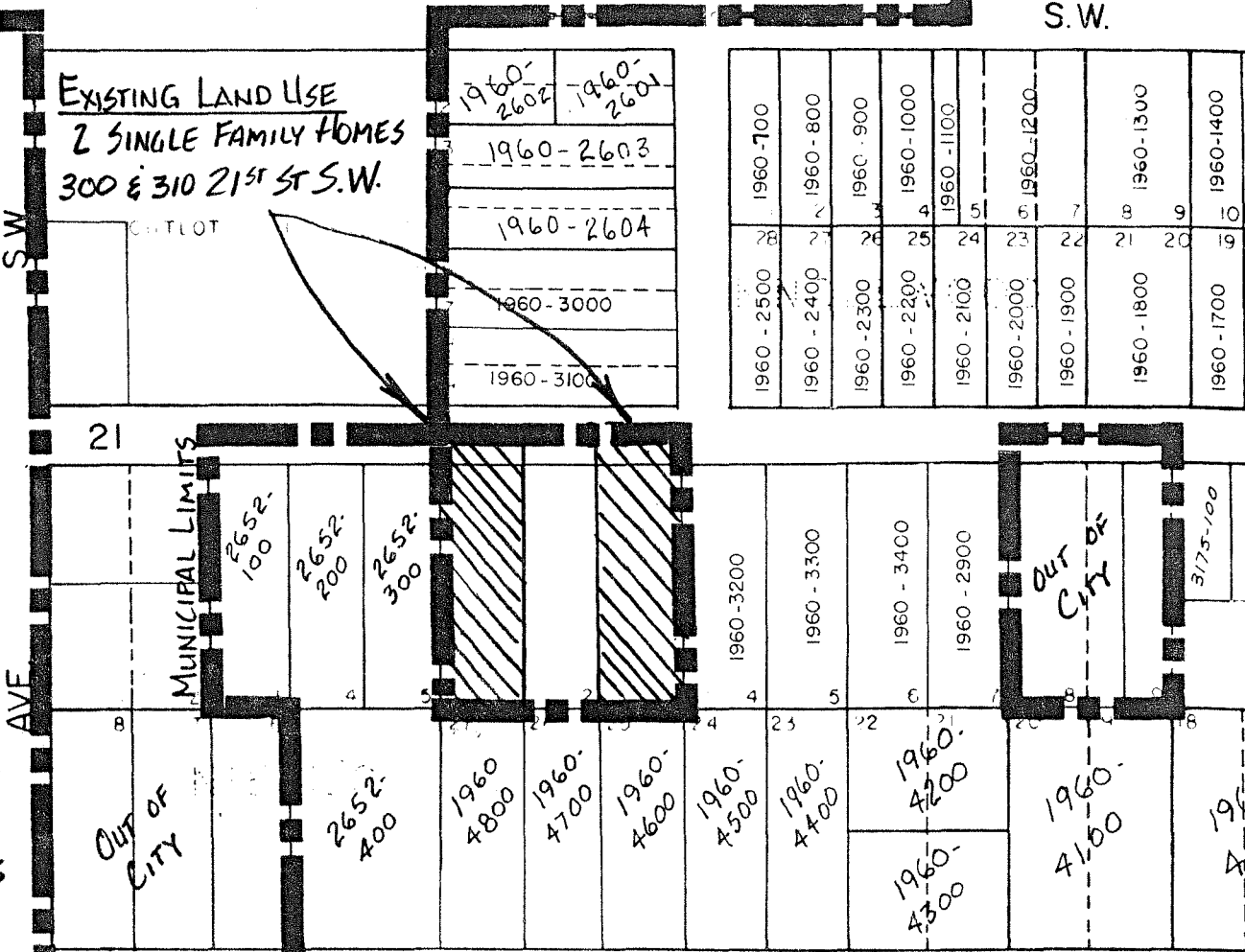
(Seal of the City of
Rochester, Minnesota)



EXISTING LAND USE
2 SINGLE FAMILY HOMES
300 & 310 21ST ST S.W.



5135-1202



CURTIS C. MUNSON
EDNA NEMODE
LOTS 1 & 3, BLOCK 3
HOLLWOOD ACRES
COLCHESTER TWP.

REVISED

ANNEXATION MAP 5

NORTH
1" = 200'

DATE: 9/18/84

DRAWN BY 5135-1302
JAS

