

AUG 18 1983

ORDINANCE NO. 67, SECOND SERIES

AN ORDINANCE EXTENDING THE CORPORATE LIMITS OF THE CITY OF AUSTIN TO INCLUDE CERTAIN UNINCORPORATED TERRITORY OWNED BY THE CITY OF AUSTIN AND ABUTTING THEREON.

WHEREAS, the territory described below is not presently included within the corporate limits of any city, village or borough;

WHEREAS, the City of Austin is the owner of the land described below and said premises adjoin the City of Austin and are deemed to be urban in character;

NOW, THEREFORE, THE COMMON COUNCIL OF THE CITY OF AUSTIN DO ORDAIN:

SECTION I: The City Council hereby determines that the annexation will be in the best interest to the City and the territory affected. That the territory described herein abuts the city limits and is urban or suburban in character and that none of said territory is now included within the limits of any city, village, or borough.

SECTION II: The corporate limits of the City of Austin are hereby extended to include the platted land described as follows, the same is hereby annexed to, and included within the city as affectionally as if it had originally been a part thereof:

The North 400 feet of the South Half of the Northwest Quarter of Section 26, Township 103 North, Range 18 West, lying and being East of the Red Cedar River, and lying and being West of the Chicago, Milwaukee, St. Paul and Pacific Railroad right-of-way.

SECTION III: The City Recorder is hereby directed to file certified copies of said ordinance with the Minnesota Municipal Commission, the Lansing Township Clerk, County Auditor, County Recorder, Austin Utilities, and the Secretary of State.

SECTION IV: The ordinance takes affect upon its passage and publication, filing of certified copies as directed within Section III.

Passed by a vote of Yeas and Nays this 1st day of August, 1983.

YEAS 6

NAYS 0

APPROVED:

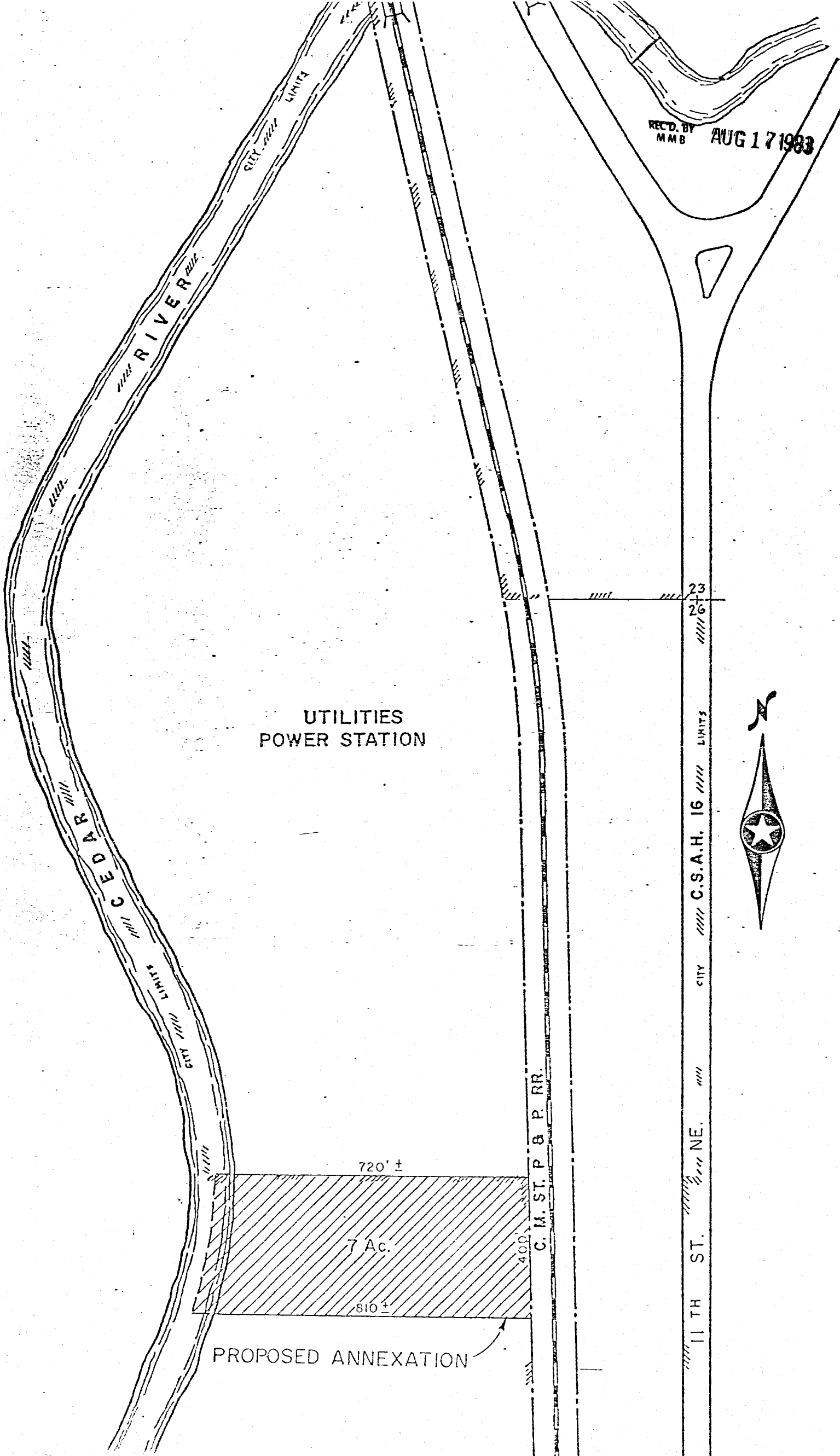
Tom H. Kough
Mayor

ATTEST:

Richard Berggren
City Recorder

(The foregoing ordinance was introduced on August 1, 1983, adopted August 1, 1983, published Austin Daily Herald on August 8, 1983, and becomes effective August 16, 1983.)

REC'D. BY
MMB
AUG 17 1983



CEDEAR RIVER

CEDEAR RIVER

UTILITIES
POWER STATION

PROPOSED ANNEXATION

720' ±

7 Ac.

810' ±

C. M. ST. P. & P. RR.

23
26

CITY LIMITS

11 TH ST.

NE.

C.S.A.H. 16

