

MINNESOTA

A regular meeting of the City Council of the City of Rockford, Minnesota, was called to order by Mayor Jones at 7:00 p.m. in the Council Chambers of the City Hall, 6031 Main Street, Rockford, Minnesota on March 14, 1983. The following Council members were present: Mayor Jones, Gloria Ball, Jim Rathbun; the following Council members were absent: Roger Diesen, Roger Ausen. A motion to adopt the following resolution was made by Ball and seconded by Rathbun.

\*\*\*\*\*

RESOLUTION # 83-18

REC'D. BY MMB MAR 16 1983

IN THE MATTER OF THE PETITION OF THE CITY OF ROCKFORD, MINNESOTA TO ANNEX CERTAIN ADJOINING UNINCORPORATED TERRITORY TO THE CITY.

TO THE MINNESOTA MUNICIPAL BOARD:

WHEREAS, certain territory described below is not presently included within the incorporated limits of any city; and

WHEREAS, this territory abuts upon the city limits at the west boundary thereof and is or is about to become urban or suburban in character;

BE IT RESOLVED BY THE CITY COUNCIL OF ROCKFORD, MINNESOTA that

1. The city council hereby determines (1) that the territory described below abuts upon the city limits and is or is about to become urban or suburban in character; and (2) that none of the territory is now included within the limits of any city.

2. The council hereby declares its intention to annex the following territory to the city: Wright County Record Book pages 292201, 292203, 292204, 292205, and 301101, that land north of the Soo Line railroad, south of highway 55, west of the present Rockford city limits extending to the apex of the Soo Line railroad and state highway 55 as designated in the attached exhibits.

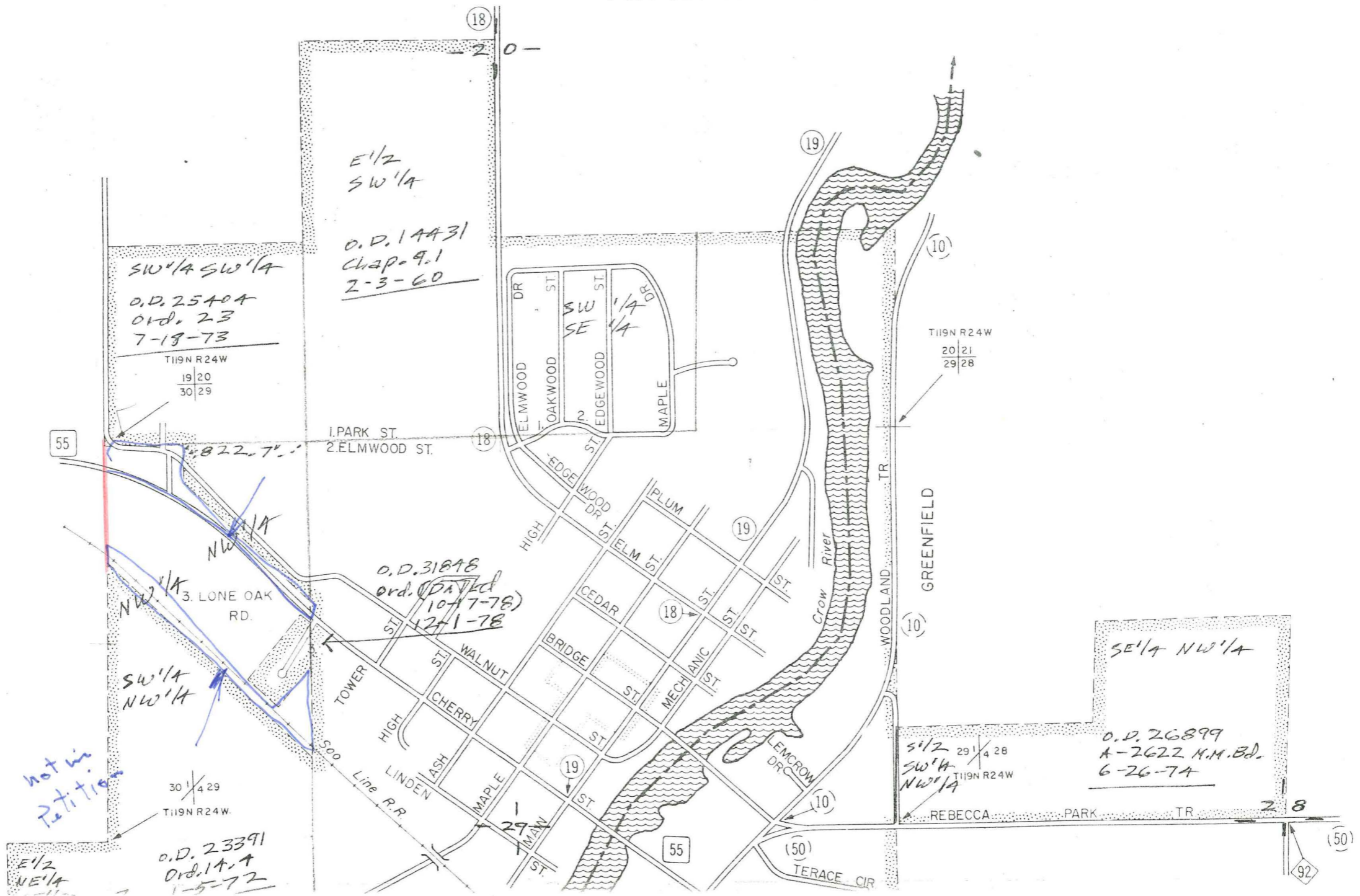
Adopted by the council of the city of Rockford, Minnesota, that 14th day of March, 1983.

The following Council members voted in favor: Mayor Jones, Gloria Ball, Jim Rathbun; the following Council members voted against or abstained:

Whereupon the motion was declared duly passed and executed.

ROCKFORD  
HENNEPIN AND WRIGHT COUNTIES  
POP. 380 POP. 2028

REC'D. BY  
MMB SEP 22 1983



REC. 44 88.

APR 15 1983

637.57

SHOPPING  
203301  
CENTER

320

320

293302  
Arts

293

292207  
Apts

535.97

Shopping  
Center  
292201  
PARKING

502.04  
763.54

292200  
Rockham  
Park  
Unit

79

38.5

292206

LEARNING  
CENTER

54.01

292205

CAMP  
MOUNTAIN

66

292202

120

292203

125

95

125

95

125

95

125

95

125

95

125

95

125

95

125

95

125

95

125

95

125

95

125

95

125

95

MINNESOTA

CITY

STATE

MPLS.

TOWNSHIP

ST.

PAUL

LONE OAK  
ADD

ROCKFORD

347.32

292262

292204

102262

292205

ROCKFORD

292202

292203

292203

ROCKFORD

RECD. BY APR 15 1983

301100  
FOUST

RAILROAD

301101  
VERGIN

55

292202

City  
Kellenmcke

MPLS.

VERGIN

292205

LAMERE  
292204

RICHARD  
292201

MINNESOTA

PAUL

ST.

FOUST

292203

CITY

292201

502.04  
463.54

292200

292207

STATE

292209

292205

LONE OAK  
ADD

ONE OAK

ADD

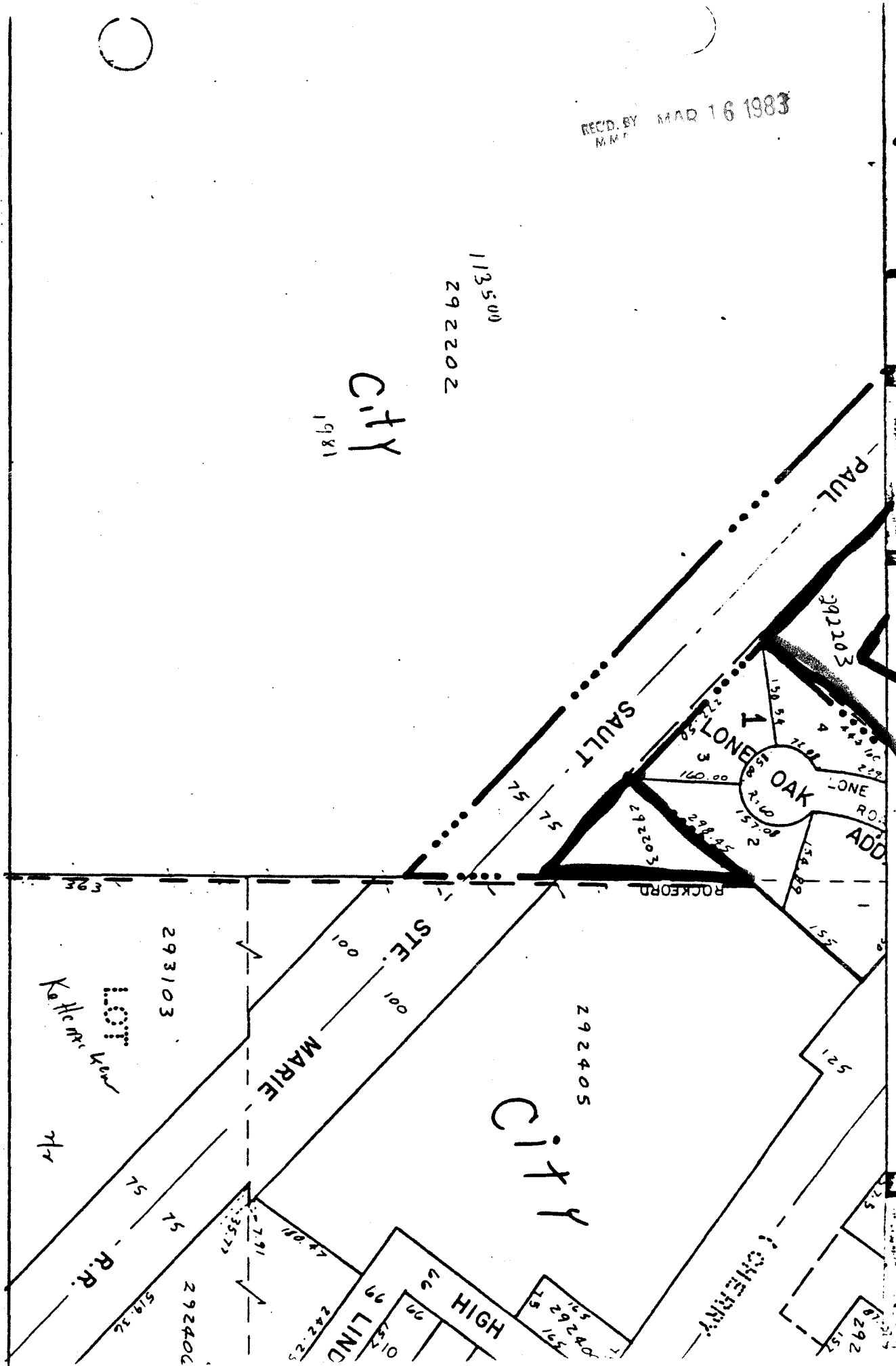
ROCK

Sheet 1 of 3

REC'D. BY MAR 16 1983  
M.M.F.

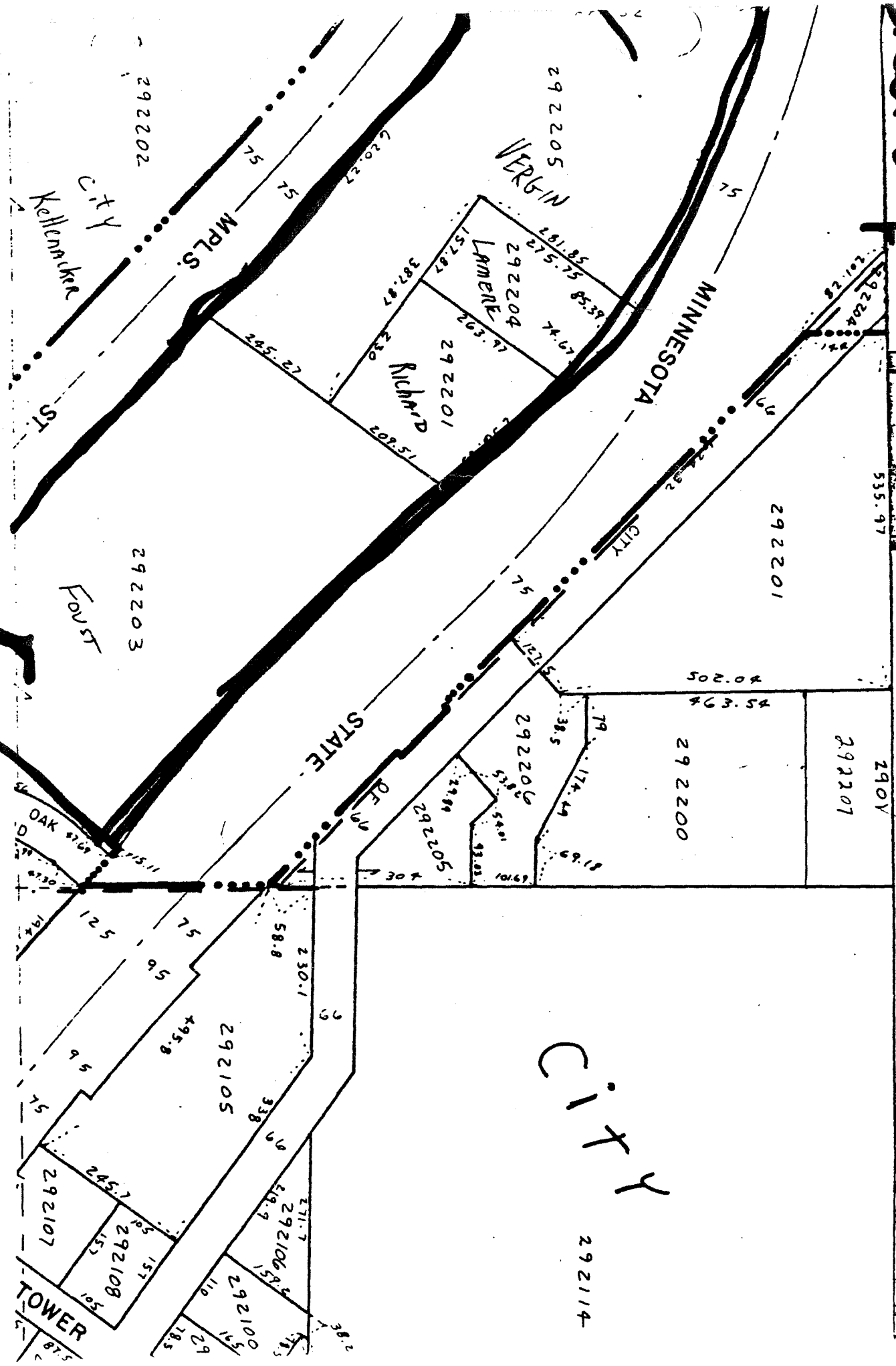
113500  
292202

City  
1981



S 1/2 NW 1/4 29-119-24

Sheet 2 of 3



N 1/2 NW 1/4 29-119-24

City 292114

# Sheet 3 of 3

MARIE

NO

55

75

RAILROAD

301101

Very W

301100

FOUR

75

75

N<sup>1</sup>/<sub>2</sub> NE<sup>1</sup>/<sub>4</sub> 30-119-24